

LOVE Cambridge

live.
work.
play.



Eat, drink,
shop, repeat

Exploring our
beautiful backyard

Celebrating
business excellence



THE BEST HEAT PUMP SOLUTION



Aircon Group Waikato is your number one destination for **residential or commercial air conditioning** in the Waikato region.

Whether you are you are looking for a single heat pump, a multi-split, or a whole-house ducted system, for your **home, business or community project**, contact Aircon Group Waikato to get your job done right, and at the right price!

Design ■ Supply ■ Install ■ After Sales Service ■
Qualified Engineers ■ 5 Year Workmanship Guarantee ■
Commercial & Residential ■ Heat Pumps ■ Air Conditioning ■
Ducted System Specialists ■ IQP ■ PS3 ■

SHOWROOM: Unit 3, 137 Ossie James Drive, Hamilton 3282 PHONE: 0508 224 7687
www.aircongroupwaikato.co.nz





A word from the Mayor

Cambridge is a vibrant town in the heart of the Waikato which many people – and certainly our residents – consider as one of the most beautiful parts of New Zealand.

With its tree lined streets, heritage buildings and boutique shopping and eateries, Cambridge is the perfect combination of charm, class and charisma. The abundance of green spaces, the power of Maungatautari and the majesty of the Waikato River add to the beauty of the area.

Part of Waipā Home of Champions, Cambridge has a very proud tradition of raising champion sportspeople. With world-class sporting facilities on our doorstep like the Grassroots Trust Velodrome and Lake Karāpiro, we celebrate our champions through the variety of national and international events that we can take great pride in hosting every year.

The talent doesn't stop there though. Cambridge is full of champion businesses, schools, community groups...and most importantly, champion spirit.

With our central location and continued investment in our trails and cycleways - it's no surprise Cambridge is known as an easy and attractive place to live and explore - and that reputation grows year on year. With growth comes challenges but most importantly opportunity and Waipā District Council is leading the way in planning for the future, while retaining the unique aspects that make our communities so special.

Cambridge is a very special part of New Zealand and I encourage you to go out and enjoy, explore and embrace what our amazing community has to offer.

Mayor Susan O'Regan

Contents

Welcome to Cambridge It's great to have you here	2	Keeping your lights on and your community connected	32
In the footsteps of our forebears	4	A journey of creativity, craft, quality and connection in Cambridge	33
Cambridge – a māra kai for sustenance	8	Hamilton Airport, a vital gateway	36
A growing town needs visionary planning	10	Education opportunities abound in Cambridge	38
Celebrating over a century of business growth in Cambridge	12	A retirement dream	40
Celebrating the crème de la crème of Cambridge business	14	Community clubs that ignite connection and purpose	44
Eat, drink, shop, repeat	16	A place to nurture your wellbeing	50
Totally locally Cambridge	20	The magic of the maunga	53
State-of-the-art manufacturing, right here in Cambridge	21	The kiwi gathering showcasing the best of agriculture	54
Takapoto Estate	22	There's always something on in Cambridge	56
Bootstrapped to building a global business	24	Sport and recreation – spoiled for choice	58
The marks made by people and the legacy they leave behind for future generations to enjoy	26	Ride the river	60
Transforming dreams into architecturally designed	28	Five reasons to love Lake Karāpiro ...	62
Meat with a mission	30	Exploring our beautiful backyard	64
		Safer Cambridge communities	67
		Venture down the Road	68
		SMEs Showcase	71

Editor: Charlotte FitzPatrick,
Belle PR | bellepr.co.nz

Design: Lisa Nicholls,
Kaz – Design. Brand. Web | kaz.co.nz

Photography: Michael Jeans,
Craig Brown Photography, Picture Show,
Te Awa Lifecare, Resthaven, Destination
Cambridge, PixInk, Cheleken Photography,
Jude Eades, Graeme Murray, Waipā DC,
Cambridge Pickleball, Bicycle Revolution.

Printer: DP Media

Owned and produced by:
Cambridge Business Chamber
cambridgechamber.co.nz

The stories presented in this publication represent the diverse and vibrant community in Cambridge. They provide a snapshot of Cambridge's businesses, organisations, and activities, but may not encompass all entities or activities within the area. Stories were developed based on the information available at the time of creation and may be subject to change. We have made reasonable efforts to ensure the accuracy and relevance of the content; however, we cannot guarantee its completeness or currency. We encourage readers to conduct further research and engage with relevant sources for the most up-to-date and comprehensive information.

**CAMBRIDGE BUSINESS
CHAMBER**

Welcome to Cambridge.

It's great to have you here!



Nestled in the picturesque Waipā district in the heart of the North Island, more people than ever before are calling Cambridge home.

The vibrancy and attractiveness of Cambridge has led to a population boom here over the past decade. An estimated 21,600 people live in the town (according to Stats NZ projections for June 2022), an increase from 18,654 in 2018.

Affectionately known as The Town of Trees, Cambridge's welcoming community, natural beauty and village-like character appeals to both residents and visitors alike.

Stretching across 26.69 square kilometres of land, Cambridge serves as a bustling urban centre in the Waipā district, offering a range of shops and services that rival those of our big city neighbours. With a prospering business environment, commitment to fostering local economic development, and the convenience of Hamilton Airport and the Waikato Expressway nearby, there is arguably no better place in New Zealand to live, work and do business.

Cambridge is only a stone's throw away from Lake Karāpiro, which provides a stunning backdrop for a range of water sports and recreational activities. Whether you enjoy boating, sailing, skiing, rowing, canoeing, kayaking, biking or camping, Lake Karāpiro offers endless opportunities for outdoor adventures.

As the home of high-performance sports, Cambridge is proud to host Rowing New Zealand, Cycling New Zealand, and Canoe Racing New Zealand.

The fertile areas surrounding Cambridge boast good quality soils, ideal for nurturing our rich agricultural heritage. Dairy, sheep and beef farming, thoroughbred horse studs, deer farming, and horticulture thrive in this region, giving Cambridge its distinctive rural character. Mystery Creek Events Centre, home to the annual Fieldays event, is also not far away.

Cambridge is a fantastic town with many wonderful places to explore. We hope you love being part of our friendly local community.

21,600 
people call
Cambridge HOME

34%
population growth
2013 - 2022

Home to people of all ages
YOUNG to SENIORS
FAMILIES 

5,900+ 
EXTRA HOMES 
on 536ha of land
projected by 2035

Fastest growing residential areas:
NORTH
CAMBRIDGE & LEAMINGTON



Excellent employment opportunities

8,123 jobs filled in 2022 

An economy outpacing the national average

11.7% compared to **5.3%**
GDP in 2022 nationally

A fantastic place to do business...

2,337 BUSINESSES in 2022
up from 1,587 a decade ago

**CONSTRUCTION
RETAIL & PROFESSIONAL
SERVICE**

were the largest contributors to local GDP

New Zealand's

**MOST BEAUTIFUL
LARGE TOWN** 2019

WE'RE PROUD TO BE...

WAIPĀ

HOME OF CHAMPIONS

Whether you're here to live...



compete...

play...



or invest...



WAIPĀ HAS IT ALL!

To see what Waipā is all about and to keep up to date, visit and follow:

 [WaipaHomeofChampions](#)
 [Waipa_NZ](#)

 whatsonwaipa.co.nz

Brought to you by



In the footsteps of our forebears

Cambridge's rich heritage includes thriving Māori communities before European settlement, land wars and post-colonial building and development. Here are 10 quick snippets showcasing the history of our town and its people.

*A view over
St Andrew's
Anglican Church
and Lake Te Koo Utu*



Horotiu Pā

Horotiu Pā was a huge Māori settlement that once occupied the whole Cambridge central business district. The name Horotiu connects back to Rakatāura, the tohunga (navigating priest) of the Tainui waka, a double-hulled voyaging canoe that travelled to Aotearoa New Zealand from Polynesia around 800 years ago. Rakatāura named the Waikato River 'Horotiu', meaning 'swift currents'. Over generations, Horotiu Pā was a safe haven for many tribes of Tainui. It was a place of refuge during the attacks by Hongi Hika and the Ngāpuhi tribe in the 1820s. Horotiu Pā fell when the British Crown invaded Waikato in 1863-1864. Te Rongopai (the message of peace) created by Brett Graham, was erected in acknowledgement of the many pā located along the gully where the expressway runs. *Source: Te Ara Wai Journeys*

The iconic water tower

When you drive down Hamilton Road, you'll see the iconic Cambridge Water Tower located in front of the Resthaven Retirement Village on the Payne Park reserve. The tower has a fascinating backstory, with public meetings held in the early 1880s to discuss the need for a municipal water supply to meet the growing demands of the town's residents and businesses. In 1902, a water supply project was approved, and construction of the 24m high water tower structure began. The tower was built with the help of Robert Morse, William George Tucker, and an old black horse named Darkie who was used to raise bricks by a pulley. It officially opened in 1903 and supplied the Cambridge township with water until around 1926.

The Anchor Dairy Factory

Henry Reynolds established the Anchor Dairy Factory in Pukekura in 1886. Reynolds used an American butter recipe to create a longer lasting butter compared to others. The longevity of Anchor butter may have been due to the breed of cows used. While Friesian cows were prevalent in America, Jersey cows were more common in New Zealand, and their milk has a higher fat percentage, which increases its shelf life. The butter had an excellent taste, thanks to the clean, pasture-based farming of the Waikato region. *Source: Te Ara Wai Journeys*



Station 44

Before 1904, fires in Cambridge were fought using buckets and hand-held fire grenades. Wooden buildings and limited water meant fire caused significant property damage. There were at least 32 fires between 1881 and 1888, and a big one in 1889 that destroyed several businesses. The new water tower in 1903 finally provided a reliable supply of water, so the Borough Council approved establishing the Cambridge Volunteer Fire Brigade in May 1904. The brigade was formed, funds were raised, the station

was constructed by volunteers, and equipment was acquired. The Fire Brigade officially opened on 24 August 1904 and was a source of much pride for the town.

Karāpiro Dam

Two successive hydroelectric dams have been built near Karāpiro, using the fast-flowing rapids of the Waikato River to generate power. Horahora Power Station was completed in 1913. The largest power development in New Zealand at the time, it was built to power the Waihi mines. The government purchased the station in 1919. It provided the bulk of the northern North Island's electricity until the 1930s, when other dams opened. Construction on the larger Karāpiro Dam was started in 1940, but materials and labour shortages during World War II meant it was not completed until 1947. Karāpiro Dam submerged the Horahora power station and village – these lie on the lake floor, where the Horahora Bridge crosses Lake Karāpiro. Today, Karāpiro is one of eight hydro dams generating electricity along New Zealand's longest river.

Impacts of the dam

A number of special places were flooded when the two dams were built, in the 1910s and 1940s. These include the sites of Māori pā (settlements), kāinga (houses), mahinga kai (food gathering places), māra kai (gardens), and wāhi tapu (sacred places) that were once situated near the Waikato River. The tangata whenua (indigenous people of these lands) had burial caves in the cliffs that once lined the river. These were submerged as well. While Pākehā (Europeans) were celebrating the Karāpiro Dam opening, the tangata whenua were on boats, retrieving the bones of their tūpuna (Māori ancestors) from the water. They reinterred the displaced bones in a safe area. *Source: Te Ara Wai Journeys*

Lake Te Koo Utu – the washbowl

Before the coming of Pākehā (Europeans), the natural resources of Lake Te Koo Utu supported a thriving Māori community. Many hapū (subtribes) lived here. There were pā (Māori settlements) on the hills around the lake. Nearby, the residents cultivated gardens. Lake Te Koo Utu was a plentiful source of kōura (freshwater crayfish) and fish. Pinau (a native grass), harakeke (flax) and raupō (bullrush) for weaving and thatching grew on the shores.

Source: *Te Ara Wai Journeys*



Victoria Bridge

The Victoria Bridge

The connection of Cambridge to Leamington and Te Awamutu was an important link in the early roading system. The first bridge completed in 1871 was destroyed by a flood in 1875 and its replacement, a wooden truss girder bridge called the “Red Bridge” was showing signs of advanced deterioration. In 1899, Mayor W.F. Buckland decided a new high-level bridge over the Waikato River was needed. The steel arch bridge was designed by the eminent American engineer John Alexander Low Waddell of Kansas City. The bridge, with its impressive design, stretches 462 ft (141m) and features a central arch of 290 ft (88m). It is 17 ft (5.2m) wide and constructed using over 330 tonnes of steel and 20,000 rivets. It still stands proudly after 150 years.

Equine capital of New Zealand

Cambridge Stud owner and master bloodstock breeder, the late Sir Patrick Hogan, was a world leader in the equine industry and put Cambridge (and New Zealand) on the map for thoroughbred breeding. Against expert advice, Sir Patrick Hogan followed his intuition and bought the young Irish stallion Sir Tristram sight unseen. This proved one of the greatest success stories in thoroughbred breeding, as Sir Tristram became a sire of champions. In 1972, Sir Patrick and Lady Justine sold their Fencourt Road property and moved to Discombe Road in 1976. Together, they built Cambridge Stud to become the thoroughbred showplace of New Zealand, and one of the most successful studs in Australasian thoroughbred history, not only home to Sir Tristram but also his incomparable son Zabeel and generations of superb mares, broodmares and yearlings. Sir Patrick died in January 2023 at the age of 83, and his legacy lives on as a legend in horse breeding and racing in New Zealand.



Lake Te Koo Utu

The Mare and Foal statue in front of the Cambridge Town Hall



The town of champions

In 2003, Cambridge established a Walk of Fame to honour exceptional achievers in the town. Those recognised receive a special plaque on Duke Street. In 2003, 24 sports achievers were inducted into the Cambridge Sports Walk of Fame. In 2006, five more sportspeople were added, followed by four in 2009 and one in 2014. The town also pays homage to the New Zealand equine industry with 12 equine mosaics installed throughout Victoria Street. These mosaics commemorate the achievements of notable racing champions such as Foxbridge, Sir Tristram, Zabeel, Charisma, and others. Additionally, Michelle Farrell's Mare and Foal statue was placed outside the Cambridge Town Hall that same year.

Cambridge Town Hall

Founded in April 1909, the Cambridge Town Hall has stood as a proud symbol of the town's rich history and heritage for over a century. Led by Mayor W.F. Buckland, the grand opening ceremony marked the beginning of a long and storied journey for this iconic building. Throughout the years, the Town Hall has played host to a wide range of events, from musical and theatrical performances to important civic gatherings. It has served as a fitting backdrop for numerous milestone occasions, including the end of World War II celebrations, and a special lunch with Queen Elizabeth II and Prince Philip in 1954. The Town Hall has welcomed many distinguished guests, including Governor Generals, war heroes, and sporting champions. It has also served a multitude of purposes, including a picture theatre, a dance hall, and an emergency hospital during the 1918 influenza epidemic.

A tale of two kings

The door grilles on the old Post Office building (now Alpino Restaurant) are unique in New Zealand. No other building in New Zealand has two kings on its façade.



St Andrew's Anglican Church

The longest-standing landmark in Cambridge

St Andrew's Anglican Church stands as a distinctive and beloved landmark in our town. The original church, located at the rear, was constructed in 1873 and is the oldest surviving building in Cambridge. It was initially built with a steeple and bell. The main church that we recognise today was built in 1881 using heart kauri and cost £1570 to construct. The entire town had a holiday when it was consecrated on 31 August, 1881.

The chimes of Cambridge

The Cambridge Clock Tower is one of the most noticeable assets in Cambridge and its distinctive chimes can be heard across town. The clock was supplied by Littlejohn and Sons of Wellington in 1908 and was originally in a tower on the Post Office (now Alpino Restaurant). Cracks started to appear in its tower and the clock was reconstructed in a new tower at its current location in 1934. It continues to be wound by hand twice a week.

Discover a treasure trove of other insights, artefacts, photographs and taonga that showcase the people and passions that shaped Cambridge at the Cambridge Museum.

 **Visit cambridgemuseum.org.nz for more information.**



Cambridge — a māra kai (or food garden) for sustenance

Cambridge is a town renowned for its highly productive and fertile land and thriving agricultural community. From the rolling hills to the vibrant green paddocks, our picturesque town is a haven for local growers who cultivate an array of fresh and flavoursome produce.

Discover a wide variety of fresh local produce such as fruits, vegetables, breads, pastries, chocolates, coffee, butchery goods, handcrafted cheeses, locally harvested honey, plants, and various condiments, all produced here in Cambridge.

Supporting local food producers is easy and beneficial, so why not buy directly from them? Here are just a few of our local gems to check out.

Cambridge Farmers' Market

Saturday morning's Cambridge Farmers' Market has gained a well-deserved reputation as the finest in the country, showcasing the exceptional quality and diversity of our local food suppliers. It's also where you'll very likely bump into friends, extended family, colleagues and neighbours as they also do their weekly shop.

Vendors and customers share recipes and planting tips, enjoying the unique connection between producers and consumers only found at farmers' markets.

Grab breakfast and your morning coffee while enjoying live music and fill your reusable shopping bag with the best artisan products and produce New Zealand offers.

Boyd's Asparagus

Boyd's Asparagus is an exceptional choice for those seeking delicious and juicy asparagus. The Boyd family's expertise in farming goes back generations, and they have perfected the art of growing this delicate vegetable. They are committed to sustainable farming methods and pay close attention to every detail.





The Lettuce Man

The Lettuce Man

The Lettuce Man is an original Cambridge Farmer's Market stallholder and brings a great range of fresh greens to the market every week – lettuces, basil, coriander, watercress and more – grown from his hydroponics operation. He also offers a self-service produce stall at the end of Karāpiro School Lane. Bring cash. Stocked daily and available 24/7.

Monavale Blueberries

Monavale Blueberries is a shining example of how careful cultivation and sustainable practices can yield outstanding results.

This family-owned business boasts the largest certified organic blueberry orchard in New Zealand and an impressive on-site café. Monavale takes pride in producing high-quality, plump, and juicy blueberries that are full of antioxidants and natural goodness.

Whether it's for a morning smoothie or a decadent dessert, Monavale blueberries are the perfect addition. Additionally, while picking your own or enjoying the café, you can relish the stunning views of Pironkia, Maungatautari, and Kakepuku mountains. A visit to Monavale is guaranteed to provide a delicious and inspiring country experience.

Kaipaki Dairies

Kaipaki Dairies takes great pride in offering the freshest and most delicious milk in New Zealand, and the locals couldn't agree more.

Kaipaki Dairies, founded in 2021, offers high-quality dairy products that are packaged sustainably. Originally selling their delicious milk in glass bottles at farmers' markets, the company has gained popularity through word-of-mouth and now supplies milk to various regions, including Waikato, Bay of Plenty, Wellington, and Auckland. Customers have the option of purchasing milk in glass bottles, on milk tap, or having it delivered directly to their business.

Kaipaki Dairies is committed to producing high-quality milk while prioritising the well-being of their cows. Their farm is among the top two percent of dairy production in New Zealand, which means that their customers can rely on them for fresh and tasty milk all year round.



The sculpture named Māra Kai (food gardens), located alongside the Waikato Expressway, celebrates the unique feature of this area. The sculpture is in the form of a "tino", which was a gardening tool used mainly by women.

Cambridge has a rich origin as a "māra kai", meaning a "food garden" or "cultivated garden" used by Māori to grow crops like kūmara. Māra kai served as a source of food and a basis for trade.

Māori settlers brought taro from Polynesia, but it did not grow well in the New Zealand environment. Therefore, they focused on cultivating kūmara, which thrived in Cambridge's fertile soils. Even after European settlement, it was common for New Zealanders to grow their own fruits and vegetables in home gardens to meet their families' needs and preserve surplus produce for times of scarcity.

Today, Cambridge continues to be a producer of nourishing and tasty local food.

Kane's Strawberries

Kane's Strawberries are a true delight for those with a sweet tooth. Nestled on Kaipaki Road, their sun-ripened strawberries burst with juicy sweetness.

With a commitment to organic farming methods and a passion for preserving the integrity of the land, Kane's Strawberries deliver berries that are a true taste sensation, enticing both young and old alike. Be prepared to queue for Christmas though – Kane's strawberries are not only huge, but also hugely popular!



A growing town needs visionary planning



Over the past decade, Cambridge has experienced remarkable growth, surpassing the national average and outpacing its neighbouring regions.

The driving force behind Cambridge's growth has been the influx of migrants from Auckland, the rest of the Waikato, and even overseas. Young families, in particular, are drawn to Cambridge due to its excellent primary and secondary schools (see more on page 38), offering the lifestyle choice in close proximity to a major city.

But it's not just young families who are flocking to Cambridge. Retirees are also finding the town to be an ideal place to call home (read more on page

40). With easy access to other parts of the North Island, Cambridge offers the perfect combination of relaxation and convenience.

From 2013 to 2022, Cambridge's population surged from 16,101 to 21,600, representing a remarkable 34% growth compared to New Zealand's overall growth rate of 17% during the same period.

As we stroll through the picturesque streets of Cambridge, it's impossible not to be struck by the town's unique character. Its verdant green belt, charming street grid pattern, trees, garden beds, historic buildings, monuments and stunning views are just a few of the things that make Cambridge the beloved community it is today.

It's important for residents to ensure the preservation, continuation, and improvement of these features in all new developments within the town. So, rapid expansion needs careful planning, with strong partnerships between the local council, developers and construction companies.

Cambridge is rising to the challenge

The town has developed five new residential subdivisions covering a vast area of 569 hectares



To maintain the town's character, the planning emphasises grid-pattern streets, large green frontages with trees, consistent building setbacks, and limited fence heights to foster safe and friendly neighbourhoods.

As Cambridge continues to grow, its commitment to thoughtful planning, diversified housing, employment opportunities, and exceptional recreational facilities will undoubtedly attract more individuals and families seeking a vibrant community that balances urban amenities with a serene lifestyle.

Bridleways, a sought-after place to call home

Thriving intergenerational communities need key ingredients in both the social and physical environment, such as outdoor spaces, accessible transportation, quality housing, social participation, respect and social inclusion, opportunities to participate, communication and information, and community support and health services.

One land and property developer that has a strong track record of community involvement and a focus on these essential elements is 3MS. With a wealth of experience and a well-established presence in the Cambridge/Waikato region, including with the development of St Kilda, 3MS is committed to building communities that foster relationships and experiences that homeowners desire for their families.

Their Bridleways Estate development is a prime example of this commitment, with comprehensive design guidelines in place to ensure a strong community for all. To ensure the highest quality of construction and project management, 3MS has partnered with a select number of trusted build teams who are dedicated to delivering according to their specific guidelines.

In addition to this, the development also features the Ryman Healthcare facility, which brings together people of all ages and provides a truly intergenerational community. At Bridleways Estate, 3MS is not just building homes but creating a thriving and supportive community that will benefit everyone who calls it home. www.bridleways.nz

and a substantial residential zone for larger lots. The Hautapu industrial zone expansions are also underway, promising increased employment opportunities.

Compact housing developments have become more prevalent as Cambridge has grown, catering to medium to high-density living. These developments feature diverse housing types, including standalone dwellings, duplexes, terrace houses, and even multi-story apartment buildings. These initiatives are essential in meeting the housing needs of the growing population.

Looking to the future, Waipā District Council is managing an ambitious roadmap for further growth and development in Cambridge. The Summerset Retirement Village and Health Hub in Cambridge North are progressing well, while growth plans for an additional residential development in North Cambridge are being finalised.

Both industrial and residential areas are being carefully considered in Cambridge's development plans. The town envisions a mix of residential and compact residential living, while larger lots will be available in new developments on the Leamington side of Cambridge.



The Cambridge Business Chamber Left to right, Felicity Mehrrens, Kelly Bouzaïd, Debbie Simes, Janine Peters, Jim Goddin, Tammy Wilson, Tracey Olivier, Jason Tiller, David Natzke, Aroha Croft, Monique Medley Rush

Celebrating over a century of business growth in Cambridge

For nearly 120 years, the Cambridge Business Chamber has been a vital support system for our local businesses, advocating for their interests and fostering relationships to promote collaboration and growth.

Proudly located in the biggest municipality in the Waipā district, the Cambridge Business Chamber has played a crucial role in the prosperity and growth of our town.

Through the Chamber's connectedness, advocacy, and support, membership has grown substantially, making it a welcoming and diverse network of over 320 businesses from various sectors and sizes.

While traditionally dominated by small and medium-sized businesses, Cambridge is now attracting larger enterprises who recognise the value of conducting business in the area, and our passionate and innovative local business network.

Cambridge's business landscape has been expanding, with the construction, professional services, manufacturing, healthcare, and education sectors making the highest contribution to economic growth. These sectors are also the town's largest employers, along with retail, food, and accommodation industries.

CAMBRIDGE BUSINESS
C H A M B E R

“We appreciate that some of our members join the Chamber to get something from the Chamber – connections, leads, visibility, networking and training. Other members are less engaged, but join to get something done through the Chamber. They want a thriving community with the required infrastructure. They want connectivity to the local council, well-managed growth and advocacy where needed. They just want to know the Chamber is working on these issues. And we are!”

Kelly Bouzaid, CEO.

Cambridge has also become an attractive destination for new businesses, experiencing a five percent growth in business over the past five years, compared to a national growth rate of 2.1 percent.

As the local business landscape changes, the Chamber continues to prioritise fostering sustainable and profitable business growth, and recognising and celebrating the achievements of local businesses through events such as the Waipā Networks Business Awards. The Chamber remains dedicated to advocating for the business community's needs while offering various resources and specialised advice.

Together, with the Chamber as its ally, local businesses are poised to thrive, achieve greatness, and make a lasting impact on Cambridge and the broader Waikato's dynamic landscape.

We celebrate the Chamber's legacy of over a century of service and its unwavering commitment to the prosperity and growth of Cambridge.



The Chamber is dedicated to its mission of uplifting and empowering local businesses through advocacy, relationship building, and knowledge sharing. It offers a range of services and initiatives that cater to the evolving needs of the business landscape, including:

- Networking opportunities
- Member communications and advertising
- Free business advice and resources
- Business training and technology workshops
- Mentoring
- Advocacy
- Business awards
- Economic development and innovation support

To get in touch with the Cambridge Business Chamber, email ceo@cambridgechamber.co.nz or phone 07 823 3460.

Join the Cambridge Chamber for the cost of one cup of coffee a week

Belonging to the Chamber gives access to unrivalled networking and referral opportunities, educational and training programmes, and effective advocacy for your business and the wider business community.



 MAKING CONNECTIONS	 GET REFERRALS	 BE HEARD	 BE FOUND
 GET ADVICE	 ADVERTISE	 LEARN MORE	 SAVE MONEY

CAMBRIDGE BUSINESS
C H A M B E R

P: 07 823 3460  
E: info@cambridgechamber.co.nz
www.cambridgechamber.co.nz

Celebrating the Crème de la crème of Cambridge businesses

The prestigious Waipā Networks Business Awards take place biennially and generate great excitement among the local business community.

The Waipā Networks Business Awards are organised by the Cambridge Business Chamber and judged by local industry experts.

These coveted awards serve as a platform to recognise and applaud the exceptional accomplishments of businesses in Cambridge and the broader Waipā district. They offer entrepreneurs and business owners an excellent opportunity to showcase their success and inspire other businesses to strive for sustainability, innovation, leadership, and excellence.

Despite the unique challenges faced by New Zealand businesses in recent years, Cambridge businesses have demonstrated extraordinary innovation, adaptability, resilience, and growth. Their stories are a testament to our local entrepreneurs' unwavering hard work and determination, and reflect our competitive spirit.



To learn more about the Waipā Networks Business Awards and how to participate, visit the official website

www.waipabusinessawards.co.nz or
contact the Cambridge Business Chamber
www.cambridgechamber.co.nz



2023 Waipā Networks Business Awards winners

Over 50 entrants in the 2023 Waipā Networks Business awards represented many different industries and included emerging ventures, small and medium-sized enterprises, and large corporations across different award categories.



Congratulations

WAIPĀ NETWORKS BUSINESS AWARDS 2023 WINNERS



Supreme Award
Treadlite NZ Ltd



Excellence in Large Business
Treadlite NZ Ltd



Excellence in Medium Business
Resolution Retreats



Excellence in Small Business
Grinter's Funeral Home and Rosetown Funeral Home



Excellence in Emerging/ New Business
Maple and Stone



Leader of the Year
Peter Nation, New Zealand National Fieldays Society



Judges Choice Award
Ignite Arts Academy



Employee of the Year - Cambridge
Emily Hudson, Homebrew Coffee



Employee of the Year - Te Awamutu
Darryl-Lynn Wilken, Varntige



Customer Choice - Cambridge
The Smoke Collective Barbecue



Customer Choice - Te Awamutu
Fresh Choice Supermarket, Te Awamutu

mediaworks.

Community Contribution
Grinter's Funeral Home and Rosetown Funeral Home



Innovation and Adaptation
Squoodles Educational Resources



Digital Strategy and E-Commerce
Squoodles Educational Resources



Waste Minimisation - Environmental
Rotary Cambridge Urban Miners



Contribution to Tourism and/or Hospitality
Riverside Adventures Waikato

www.waipabusinessawards.co.nz



*Alpero,
a touch of Italy
in the heart of
Cambridge*

Eat, drink, shop, repeat

If you haven't had the chance to explore our boutique shops, eateries and bars yet, you're in for a treat.

Cambridge offers an array of unique and delightful experiences and a convenient and welcoming atmosphere that enhances your journey of discovery.

Picture this: free parking throughout the town, allowing you to explore leisurely without the worry of searching for a spot in a parking building. Everything is within walking distance, from the charming shops to the cafés and bustling markets. As you stroll along the streets, you'll feel the sense of community that sets Cambridge apart.

Cambridge is where everyone knows your name, and you're bound to bump into familiar faces while walking down the street. This familiarity and connection make the boutique shopping experience in our stunning community even more satisfying. Engage in conversations with friendly shop owners who are passionate about their products, and let their personalised recommendations guide you towards hidden gems.

Cambridge invites you to immerse yourself in a world where convenience, warmth, and familiarity intertwine seamlessly, ensuring that your journey of eating, drinking, shopping, and relaxing is nothing short of exceptional.



*Olio
Design*

FACT

Cambridge has one of New Zealand's highest CRPCs, cafés-and-restaurants-per-capita



HUS homewares, furniture and fashion

Foodies are spoilt for choice in our beautiful town with award-winning restaurants, quirky cafés, beer experiences, healthy fixes and much more.

Cambridge offers a variety of eateries, including casual cafés that serve top-notch coffee and locally-sourced dishes, as well as upscale restaurants that have received recognition for their fine dining menus. Additionally, many cafés and bakeries in the area make delicious cakes, biscuits, and slices from scratch.



Personal service at Paper Plus

Amongst the town's eateries that have claimed national attention is the Italian-themed Alpino Cambridge, named in the Cuisine Good Food Awards as a restaurant to watch. Another is Alpha Street Kitchen & Bar, which is housed in the landmark National Hotel built in 1912.

Local delis and speciality food stores

For a world of flavours, visit Over the Moon Dairy, The Store, and Dantes Fine Foods. These local artisan delis offer an array of specialty handcrafted cheeses, Belgian chocolates, Italian pasta, artisan bread, and much more. They cater to various dietary needs and also stock frozen goods like Duck Island ice cream,

par-baked bread, specialty pies, and salmon.

Volare on Empire Street is your go-to for New Zealand's best sausage rolls, croissants, hot cross buns, custard squares and sourdough bread.

Looking for healthy options? Head to Fillgood. This organic grocery store offers bulk bin wholefood and eco-friendly refill cleaning products, ensuring you can nourish your body inside and out.

Shop till you drop

If it's shopping you are after, Cambridge has it all. There's something for every budget, with luxury boutiques blending seamlessly alongside more affordable fare.

If you're into fashion, you'll absolutely love shopping in Cambridge! Not only does the main street offer a variety of unique clothing options for men, women, and children, but the side streets do too. You can find everything from cocktail dresses and race day outfits to lingerie, luxurious linens, leisure clothing, baby knits, and even that perfect pair of jeans you've been searching for. Plus, teenagers will find plenty of surf, street, and skate clothing options. And don't forget the accessories and jewellery – you can find it all within walking distance.

ONYX

Open 11am weekdays and 9am weekends . No surcharge on public holidays
 P: 07 827 7740 A: 70 Alpha Street, Cambridge www.onyxcambridge.co.nz



Over the Moon Dairy,
Waikato handcrafted
cheese and deli foods



Hanoi Boy



The Heritage
Trading Co.



Onyx

If you're in search of homewares, be sure to check out Hus, Olio Design, Green with Envy, Simply Divine Kitchen, Wallace and Cotton, Leven, and Odell Home for stunning collections including furniture, homewares, lighting, nursery décor, world-class quality kitchenware, bed linen and nursery furniture. You will find sheepskins, specially chosen antiques and homewares, outdoor furniture collections, ceramics, mirrors, rugs, lamps, and architectural pieces. Interior styling services, to provide you with some visual inspiration and practical ideas are also offered.

At Ivy Florist, Expressions Floral, and Inspired by 2, you can find a selection of fresh and modern bouquets, indoor plants, and a variety of gift options for men, women, and children. They also offer homewares and souvenirs.



Art and antiques

The town is a favoured haunt for antique collectors – or anyone keen to pick up a previously owned treasure. One example is Alys Antiques and Fine Art, which sells genuine antiques mainly of English origin. The shop was established in 1964 and is one of the oldest Antique Shops in New Zealand.

For those interested in fine art, the Cambridge Art Gallery offers a wide range of paintings, glass, sculptures, rugs and ceramics, while Heritage Gallery stocks premium New Zealand made products, from merino clothing, studio glass and jewellery to unique art pieces and more.



Online options too

If you're more inclined to shop online, you can still support local. One example for knitting enthusiasts is Edie & Co, which offers sustainably sourced yarns from around the world, inspiring you to create like your Nana did. Whether you're into knitting, crocheting, or weaving, the meditative nature of these crafts can work wonders on the mind and soul.

Another local success story is Squoodles providing educational toys and resources for schools, educators and Kiwi families.

Op shops with hidden treasures

For bargain hunters and vintage enthusiasts, on Duke and Anzac Streets, you'll discover great op shops like Salvation Army, Hospice, and Animal Rescue, offering clothing, footwear, homewares, sports gear, children's items, and even retro furniture. Across the bridge in Leamington, Jumble Around is a popular general op-shop that's supported Cambridge community groups for over 50 years.

And there's the Lions Trash n Treasure Market (see page 44), featuring over 200 stalls offering a variety of products at great prices. The town also boasts a cluster of second-hand shops, Mint, promoting recycling and sustainability in the fashion industry, and the Lions Shed on Vogel Street, where you can find larger household items.



**Eat, drink, shop
Cambridge**



This editorial feature is created based on the information provided and aims to showcase the unique shopping, dining, and relaxation experiences available in Cambridge, New Zealand. Please verify the details and opening hours with the respective businesses before your visit. Also visit www.cambridge.co.nz for more information about shopping, eating, drinking and staying in Cambridge.



Totally locally Cambridge

A movement here in Cambridge has taken hold, emphasising the importance of supporting local businesses.

Totally Locally Cambridge is more than just a concept; it's a way of life embraced by the community.

At the heart of Totally Locally Cambridge is a belief in the power of supporting local businesses. By choosing to shop and dine locally, you are not only contributing to the livelihoods of your neighbours and friends, but you are also fostering economic growth and nurturing a strong sense of community.

The unique boutique shopping scene we have in Cambridge is second to none, where local artisans and craftspeople showcase their talent and creativity through handcrafted products. From clothing and accessories to toys and home decor, each item reflects the essence of Cambridge and is made with love and care.

But it's not just about the tangible goods. The eateries in town offer a food lover's paradise, with incredible restaurants and cosy cafés that take pride in using locally sourced ingredients. By patronising these establishments, you savour delicious flavours and support the farmers and producers who contribute to the local network.

What truly sets Totally Locally Cambridge apart is the sense of connection and community spirit that permeates through every interaction. Shopping or dining locally allows for personal interactions with business owners and staff who are passionate about what they do. Their warm welcomes and personal touches create an experience that goes beyond transactions and builds a sense of belonging.

Join the movement and immerse yourself in the magic of Totally Locally Cambridge. Explore the boutique shops, savour the flavours of local eateries, and engage with passionate individuals who make this town unique. By supporting local businesses, you become a part of the fabric of Cambridge, contributing to its success and ensuring a thriving community.

Remember, every purchase you make is not just a transaction; it's an investment in the people and the place you call home.



**Totally Locally
Cambridge**

**TOTALLY
LOCALLY
CAMBRIDGE**

**IF EVERY
ADULT IN
CAMBRIDGE**

**SPENT
JUST \$10
PER WEEK**

**IN THEIR
LOCAL
INDEPENDENT
SHOPS,**

**IT WOULD
BE WORTH
AN EXTRA
\$6,084,000.00
A YEAR**

**GOING BACK
INTO THE
LOCAL
ECONOMY.**

**MAKES
YOU THINK,
DOESN'T IT!**



TotallyLocallyCambridge

**CAMBRIDGE BUSINESS
CHAMBER**

P: 07 823 3460

**E: info@cambridgechamber.co.nz
www.cambridgechamber.co.nz**



State-of-the-art manufacturing, right here in Cambridge

Cambridge's northern industrial zone experienced remarkable transformation in recent years, most notably with APL's relocation to Hautapu in 2021.

Visionary local entrepreneur and major shareholder of Architectural Profiles Ltd (APL), Mitch Plaw, spearheaded the establishment of the groundbreaking manufacturing facility in Hautapu. It's an architectural masterpiece that prioritises sustainability and operational efficiency.

The building boasts advanced technologies in construction, hybrid mechanical services, electronic LED lighting, and manufacturing machinery. It has also achieved a 5 Greenstar rating, which signifies its world-class design, construction, operation, and fit-out practices.

The development of the expansive Hautapu property was a strategic move that will lay a solid foundation for the company's future growth. As part of the Profile Group of companies, APL window solutions and the

wider Profile Group family has evolved a vertical supply chain to deliver end-to-end window and door solutions.

One of the group's businesses, APL Manufacturing relocated their operations to Hautapu, and recently created subsidiary, Architectural Glass Products (AGP) set up shop. AGP is a state-of-the-art, double-glazing manufacturing business which enables the group to offer a complete window system solution.

"We strive to be world-class role models in future vision, long-term strategy, innovation, product design, and operational execution. Most importantly, we genuinely care for people, our community, and the environment."

APL has a rich history in Cambridge. The company was established by the Plaw family back in 1971, with their facility at that time located on Bellevue Road. Today, the family-operated business is the largest manufacturer of aluminium windows and doors in New Zealand.

The Plaw family are extremely generous when it comes to local community and environmental initiatives. Their ethos of genuine care extends beyond business success and reflects a vision of building better communities.

APL has actively supported educational institutions, charitable organisations, and local bodies. Their dedication to sustainability, wellbeing, and the circular economy has been furthered by the involvement of Mikayla Plaw, Executive Director Sustainability for the Profile Group.

"We want to lead the industry in a really positive way – to reduce our landfill, to innovate in better ways to package our product and to uphold our social responsibility.

We are inspired to initiate that change and create progress that makes these changes more accessible for all."

For more information visit www.aplnz.co.nz

Takapoto Estate



Takapoto Estate is a living sanctuary and family legacy. It encapsulates everything that is beautiful about its surroundings and provides a place for future generations to enjoy its bounty.



This paradise covers 200 hectares of rolling hills in Maungatautari and offers an unforgettable experience for visitors.

At the heart of the estate lies the vineyard, which produces award-winning varieties of Chardonnay, Pinot Noir, and Rose. The grapes are handpicked and carefully crafted into premium wines that are a testament to the estate's dedication to quality.

But Takapoto Estate is more than just a winery. The estate offers an exceptional equestrian facility too. The Winter Series and Takapoto Classic are highly anticipated events that attract equestrian competitors from all over New Zealand and provide a unique opportunity to experience European show jumping in Cambridge. While the shows are running, the Takapoto café and Riders Bar are open and they often have foodtrucks and retail stands onsite. A great destination for a meal, coffee, bubbles or a gin cocktail depending on the time of the day of course.

Takapoto Estate is also a haven for nature lovers, with over 60 hectares of native forest that is home to a rich diversity of flora and fauna. Over 800,000



native plants, including Ratas, Tawa, Nikau, and Rewarewa, have been selectively chosen and planted to thrive in the ideal climate. The Estate also has a focus on Kauri trees, with over 5,000 of them set to tower over other species in the forest.

Visitors to Takapoto Estate can enjoy a scheduled guided tour of the property and its eco-friendly initiatives. The tour provides a

chance to learn about the estate's impressive efforts to restore the land and preserve the environment. The knowledgeable Takapoto team will guide visitors through every step, from pest control techniques to conservation initiatives. The tour also includes discussions about Takapoto's gardening techniques and organic practices, including advice on sustainable gardening and pest control.

For those looking for a unique extended escape not too far from home, the luxurious and serene Lakehouse cottage at Takapoto Estate is where you can enjoy breathtaking views of Karāpiro. Indulge in a unique and memorable experience with the fully stocked pantry and fridge, offering breakfast items produced and harvested from the Estate's chickens, bees, Angus beef, vineyard, olive trees, and market garden.

Takapoto Estate has various function and meeting areas for corporate events. The facilities offer top-notch amenities and services to ensure the guests' comfort and convenience. The outdoor spaces are ideal for team-building activities and events, providing an inspiring and unique setting. Additionally, the estate is

For more information visit www.takapoto.co.nz

a magnificent wedding venue with stunning natural surroundings, where beautiful grapevines create an exceptional backdrop for your special day.

Takapoto Estate is a true gem, a sustainable haven that offers an escape like no other. Whether you're a horse lover, wine lover, nature enthusiast, or corporate planner, Takapoto Estate is the perfect destination for your next adventure.





Lee Reichardt, Jeremy Johnson, Grant Johnson, and Richard King Rocketspark founders



Some of the Rocketspark team look at the most voted for feature requests from partners

Bootstrapped to building a global business

The process of designing, building and launching a website used to be a daunting one for the non-tech savvy. Until three kiwi flatmates teamed up with one of their brothers working abroad and realised there was a better way.

Self-funded and launched in 2009 with just one client, the Cambridge-based software start-up Rocketspark, now has clients in 36 countries and thousands of websites to their name.

The founding four members, brothers Grant and Jeremy Johnson, along with good mates Richard King and Lee Reichardt, just happened to have the perfect complimentary backgrounds in management, web design and ecommerce for the job.

Despite now having multi-million dollar companies on their bill, they have a strong local focus and have created website solutions for more than 1,000 Cambridge and Waikato businesses.

Simplicity the key to success

In those early years, the friends realised that existing website builders were complicated and the process of creating a website from scratch overwhelming.

“We created Rocketspark for small business owners and designers because they often find themselves short on time and knowledge, and feel overwhelmed by international options and the task of building a website alone,” says Jeremy Johnson, cofounder and head of product.

“We came up with the idea that if we focused on a website-builder, that would take care of the development side and then we could focus on offering design and support.”

The result was an easy-to-use and cost effective do-it-yourself website creator, that streamlined the entire website process making it easy for business owners to be in control of their own sites.

Their initial website was a modest affair. Looking back at what they started with, it was very basic, but Jeremy says that’s exactly what made it so easy to use.



“It’s still quite astonishing to us that we’ve managed to achieve what we have, being a small team, in a small town.”

Jeremy Johnson

A creative launchpad

Over time, graphic designers started to use the platform for their clients so Rocketspark focused on this as a partnership opportunity.

They created Rocketspark Studio for designers and as the list of design partners grew, they then created an entire community hub called Creative Launchpad for designers to learn and connect.

“Working with designers who use Rocketspark for their clients has been a key source of growth,” Jeremy explains.

“By attracting designers to Rocketspark, we can foster an ongoing reseller partnership where that one designer keeps bringing new websites live over time. Creative Launchpad is open to all independent graphic designers. We can help them with the challenges of running a business and they can get to know our team before jumping in as a partner boots and all.”

Boom during the gloom

Quick thinking saw the company experience significant growth early in the pandemic.

Jeremy says that responding to the many companies who were looking to get their businesses online quickly saw some more innovative solutions come to light.

“We have many clients in hospitality and food services so we developed a scheduled ordering system that the likes of restaurants, cafés, bars, butchers, bakers and florists could use to set up schedules for pickup and delivery of orders.”

While they might have been riding the wave, they were also well-positioned to catch it after spending years honing their product and operations.

Growth trajectory

Since 2018, Rocketspark has received funding to support their ongoing research and development programme, including from New Zealand Trade and Enterprise to help them to grow in Australia. This has helped to build connections, feed their talent pipeline and ramp up international expansion.

With team members based in Cambridge, Auckland, Raglan and Melbourne, Rocketspark always keeping an eye out for talent as they grow. Part of their community focus is providing opportunities to local graduates, and even high school students.

Small team, small town, big sparks

Rocketspark’s ingrained innovation vein saw them win the Add-on Innovation Award at the UK Xero awards 2015 and locally, they brought home the Supreme Award at the Waipā Networks Business Awards in 2021, and won the Excellence in large business category.

Being based in Cambridge and the Waikato allows the team to be really close to a large concentration of local businesses that have Rocketspark websites.

“Walking out the door and up the street to our local café and we are seeing and talking to customers with Rocketspark websites, that’s magic,” says Jeremy.

He loves the lifestyle that living and working in Cambridge offers. “Rather than spending hours every week sitting in traffic, I can spend that time cycling the river trails, running our forested urban trails or just spending more time with my family.”



You accomplish more when you work with a team as a team.

Proud to be Rocketspark’s First Platinum Partner - 100+ websites.



60 Duke Street, Cambridge. Phone: 07 823 4932 . www.kaz.co.nz

The marks made by people and the legacy they leave behind for future generations to enjoy



Photo credit:
Antanas Procuta

Words: Antanas Procuta, Paua Architects

Cambridge past and present

From its early beginnings, Cambridge has developed into a great place to live. The river beach where the Karāpiro stream flows into the Waikato is the place where waka beached, the first steamboats moored, and people disembarked, fished, made fires, shelter and pā, and eventually, planned and made a town.

It must be acknowledged that the township of Cambridge was set in place through the time of the land wars. Hence Kingi Tāwhiao's 'Okō Horoi'; Cambridge being his washbowl of sorrow, and that reconnection of whenua, mana, iwi, and the town is still to come together over time.

In the years since its establishment, many people and generations have invested a great deal of thought and care in the making of Cambridge, leaving the legacy that we enjoy today.

Great places rarely happen by accident. Cities and towns are initially defined by their geography, including harbours, hills, lakes, rivers and mountains, and the weather of their location. Cambridge is landmarked and shaped by Te Awa o Waikato and its steep banks, and the pouwhenua maunga of Pukemoremore, Pukemako, Pukekura, Maungatautari and Maungakawa.

However, great places also come from the intensity, texture and history of buildings in towns. The initial design vision and town survey work undertaken in 1863 under surveyor general, Charles Heaphy has

been fundamental in creating Cambridge's ambience, lifestyle, and successes since these marks were made on paper, and then mapped across the land.

Most great towns and cities also have a building or feature that becomes an iconic landmark and identifier of place. Think the Eiffel Tower for Paris, or on a more local scale the Beehive in Wellington or Len Lye Centre in New Plymouth. Cambridge is lucky to have more than one of these, indeed a sequence.

Firstly, the picture many out-of-towners will likely have of Cambridge is the landmark of St Andrew's Anglican Church, designed by Thomas Mahoney.

Secondly, the 1909 Cambridge Town Hall, designed by A.B. Herrold and commissioned by the Borough Council under Mayor William Buckland, is beautifully sited atop the rise above the Cambridge central business district (CBD).

Curiously it is the Cambridge Town Clock that is my favourite civic architecture in Cambridge. Designed by architects Edgcombe and White to house the clock removed from the post office following the 1931 Napier earthquake, the clock tower is

strategically sited at the top of the CBD, a connecting beacon of sound and time.

Accompanying the experience of these Cambridge landmarks are the ever-present trees Cambridge is known for, especially the avenue of London Plane trees down the main street. These too are a legacy left by previous visionaries, including Mayor Thomas Wells and his colleagues of the Cambridge Domain Board, responsible for what we now know as Lake Te Koo Utu, the surrounding domain and pathways.

*Kia whakatōmuri
te haere
whakamua*

*'I walk into the
future with my
eyes fixed on the
past'*

House at Norwegian Road, overlooking Roto-o-Rangi, Cambridge and Pukemoremore. Photo credit: Simon Devitt



Also noteworthy are educationalist Arthur Broadhurst, who founded St Peter’s Cambridge, his architect Roy Lippincott, and the undertaker and architect James Thomas Douse, who created the many great Cambridge roughcast houses and the Arts and Crafts 1927 Central Hotel.

More recently, new generations of developers are leaving their legacy for the town. My practice, Paua Architects, has been fortunate to work with a number of these legacy clients, including the developers behind Cambridge Park, Le Quesnoy Place townhouse enclave, and the Cambridge Police Hub. The latter is a joint endeavour between Waikato-Tainui and the New Zealand Police, and the first civic building in Cambridge that acknowledges the history of Waikato-Tainui in the town.

Cambridge future

Ultimately architecture and the townscape are the stage upon which we play our lives. As Sir Winston Churchill noted, “we shape our buildings; thereafter, they shape us”.

Almost always, the most important consideration in making a great place to live, is to look forward. As others have previously, we now have the opportunity to leave a legacy of quality and care.

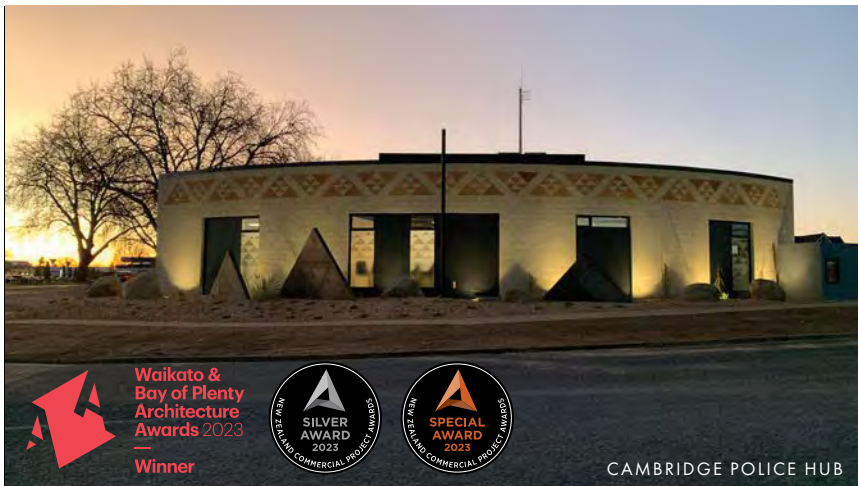
My own future vision of Cambridge is of a town centre free of commuter traffic and made more vibrant by an increased population living in high-quality mixed-use developments within walking distance of the commercial areas.

It is a town that has embraced its cultural heritage, and mana whenua, and celebrates and enhances the connection, culturally and physically, to the river, Te Awa o Waikato.

The Cambridge of the future has planned for, provided, and retained a variety of property types and sizes for different lifestyle options, including land holdings that are large enough to have urban gardens, and, equally, access to community gardens and parks for those living on smaller properties.

It is a town that has integrated and balanced the natural environment with the built environment; it is still the town of trees.

Above all else, Cambridge in the future, just as now, is a town of quality and of community.



Waikato & Bay of Plenty Architecture Awards 2023
Winner



CAMBRIDGE POLICE HUB

PA
UA

Procuta Associates
Urban + Architecture



Contact us 07 839 6521
www.pauaarchitects.co.nz

Transforming a vision into a dream home



Maungatautari
new build

When building a truly unique and beautifully designed house, GD Pringle Building's exceptional work and dedication to the craft have made them an award-winning local construction company.



Pukerimu
Lane

Investing in building or renovating a dream home is a significant commitment for both the customer and GD Pringle Building. So they are selective about the projects they take on to ensure that both parties share the same vision and can work together to achieve it.

Founder and managing director George Pringle says the team takes enormous pride in their workmanship, paying close attention to every detail and aspect of their service.

Systems and checklists are in place at every phase of the construction process to guarantee a high-quality build. They're also meticulous when selecting subcontractors and suppliers, with stringent criteria to ensure everything's perfect for the client.

"From the initial concept to the completion of the project, our team goes above and beyond to ensure complete customer satisfaction and to exceed all expectations," says George.



Tamahere
new build



Henley
Hotel



“Once we’re working together, expertise, professionalism, and commitment to excellence are the foundations for turning our client’s vision into reality,” he adds.

Raised in Cambridge, George and his wife Julie moved back to Cambridge from Timaru in 2010 to raise their young family. After years in the New Zealand Defence Force, George completed his building apprenticeship and GD Pringle Building was established in 2010.

Over the past decade, GD Pringle Building has expanded from a one-man band to a team of 12 talented individuals who are amiable, diligent, and committed to delivering exceptional final products for their clients.

They specialise in constructing unique architectural homes and high-end renovation projects.

Their commitment to quality and precision has won GD Pringle Building Gold, Silver and Bronze Master Builder House of the Year awards in 2018, 2019, 2020 and 2022, and the prestigious Top 100 Award in 2020 and 2022.

“Whether you’re looking to construct a unique architectural home or renovate an existing one, GD Pringle Building is ready to assist you every step of the way,” says George.



Cambridge
East
renovation



+64 27 308 4515 | george@gdpringlebuilding.co.nz | gdpringlebuilding.co.nz

Meat with a mission



Award-winning family business Wholly Cow is on the cutting edge of a circular meat movement, run out of a Cambridge butchery.

Walk through the Andrews' family-run butchery shop doors and you get the feeling you could be in a small English village. One where the owner knows the name of locals and people often go in just for a chat.

It's the small-town, family-run feel that's a key part of Tom and Carrie Andrews' business success.

That, and the niche they have carved out as a farm-to-plate, sustainable butchery for locals that want to know the story behind their meat.

Offering beef, lamb and goat that's reared and finished on their Whitehall farm and sourcing free-range pigs and chickens, the butchery is just one part of the Wholly Cow business. It is a success story which has seen them recently receive a 2023 Ballance Farm Environment NZFET Innovation Award.

A circular economy

In 2018, the Andrews built a micro-abattoir on their farm which meant that they removed the need for off-site processing. The waste from the micro-abattoir and used packaging from the butcher's shop are mixed with straw and broken down into compost to use on the farm.

This sustainable loop ensures that no part of the animal goes to waste.

"We have created an independent circular economy," Carrie says.

"From paddock to plate, we are responsible for each part of the production process."

With Tom in charge of the farming and abattoir side of the business, Carrie focuses on reducing waste, which has seen her creativity and innovation bloom with ideas for how the business can be more sustainable.

Using tallow, an animal byproduct, Carrie has created an entire line of skin products including lip balms, soap, skin balms and tallow and beeswax candles along with the original bags made from waste fat, which replace plastic butchers' bags used for their fresh meat service in the butchery.



Beauty products using beef tallow



“Wholly Cow is more than meat.”

Carrie Andrews



From this early age, the Andrews’ children (Olivia, Luke, Reuben and Grace) were unknowingly gaining valuable business skills and confidence through helping Carrie or Tom at the farmers’ market.

The mobile butchery stall in Cambridge led to expanding and taking the opportunity to have a permanent shop in town.

Sustainability and business is in the blood

Managing the butchery today is their second oldest, Luke. A trained butcher by age 17, he honed his business and people skills

at the weekend markets with his siblings. He is part of the five-strong team who run the Cambridge shop and his whole animal butchery skill set earned him a finalist spot at the 2022 New Zealand Young Butcher awards.

Youngest daughter Grace also runs her own recycled clothing store, Mint, in downtown Cambridge. It’s a consignment store that sells clothing on behalf of the original owner in exchange for a percentage of the selling price, all in the interest of slowing down fast fashion.

It’s clear that Grace has inherited her mother’s strong sustainability focus.

A butchery with a conscience

Working on sustainability, recycling and regenerating is a something that takes time and is always at the forefront of their minds.

“Our approach gives respect to the animals, land, community and wellbeing, whilst giving us a greater sense of purpose and has huge scope for creativity,” says Carrie.

Wholly Cow and the family and heart behind the business shows that it is possible to run a sustainable business and produce some of the best cuts of meat around.

Getting the community involved

Wholly Cow customers are encouraged to return compostable meat trays to the butchery, where they are taken to the farm for worm food along with newspapers so they can wrap the customer’s meat purchases, replacing the need for bags.

Their customers are brought on this journey of sustainability, and educated on what can be a better way to be responsible shoppers.

Farmers’ market starts

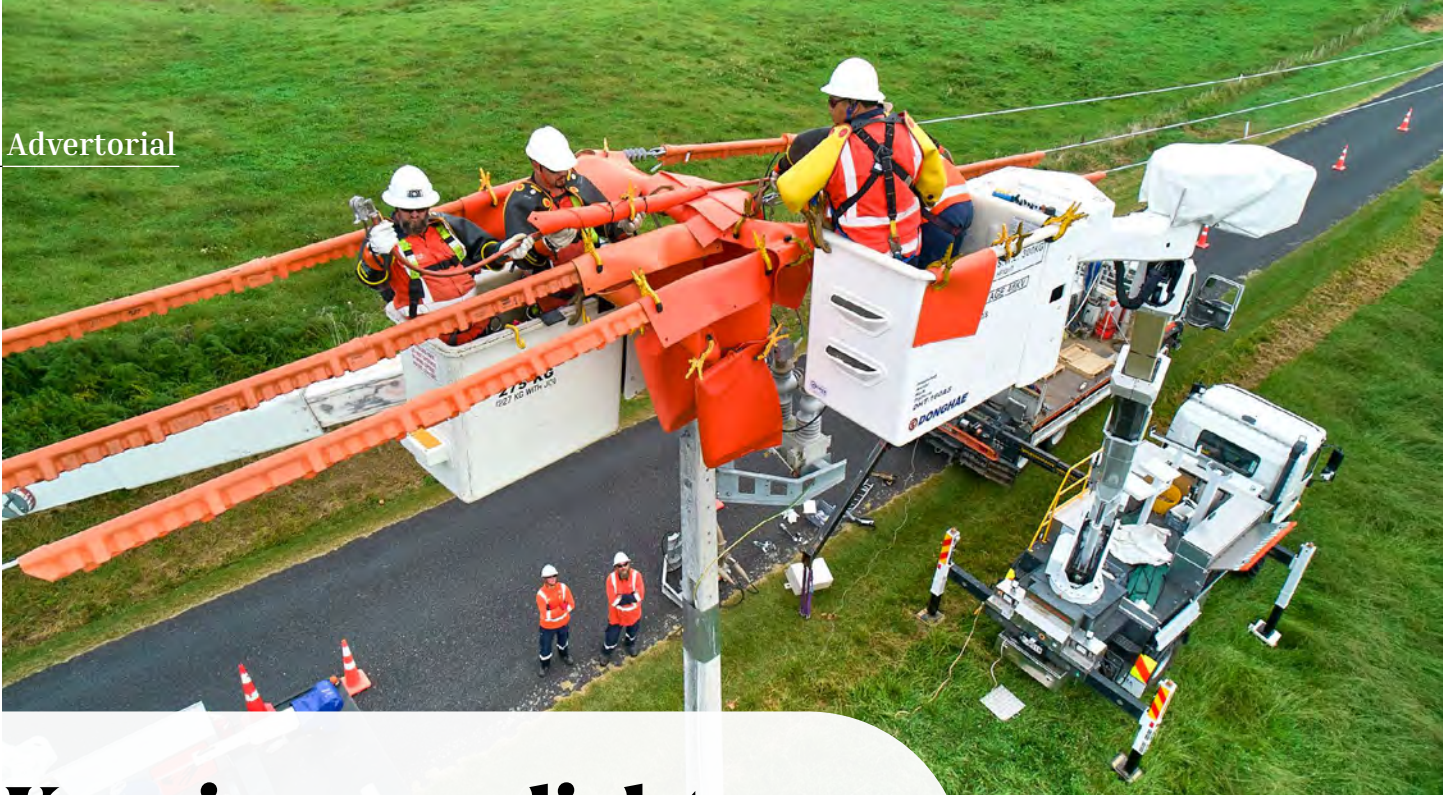
Originally from Raglan, the Andrews purchased 186 hectares on the outskirts of Cambridge in 2007.

“Cambridge has a very supportive, caring community and being so central makes it easy to connect to other areas easily. We love Cambridge and the connection with the community through running a local butchery,” says Carrie.

With their new land, they started farming beef stock and sending them off to the works in the traditional fashion.

The lightbulb moment came when they realised how crazy it seemed that all of the beef they were growing was getting sent straight overseas.

“We decided to build a trailer, we found a processor, Tom packed it all and we would head to the Cambridge, Tauranga and Hamilton farmers’ markets at the crack of dawn, along with our four kids when they were four, seven, nine and 11.”



Keeping your lights on and your community connected

Waipā Networks is a consumer-owned Electricity Distribution Business (EDB) that serves the Waipā region in New Zealand.



We are wholly owned by Waipā Networks Trust, representing local electricity customers, and are committed to providing safe, reliable, and affordable electricity to our communities.

We are one of 27 EDBs in New Zealand, including 19 which, like us, are consumer owned. We form a part of the critical chain within the electricity supply industry that transmits and distributes electricity and we've been around for over 100 years.

As one of the fastest-growing electricity distribution businesses in New Zealand, we play a critical role in our region's energy supply chain ensuring that residents, businesses, and industries have access to the power they need to thrive.

As well as being the regional electricity distributor, we offer additional services including vegetation management, contracting services, and advice and support to optimise power supply utilisation. Our fault service is available 24/7 if you experience a power outage.

Contact us today to find out how we can help you.



0800 800 769 | talk2us@waipanetworks.co.nz | waipanetworks.co.nz



A journey of creativity, craft, quality and connection in Cambridge

At the bottom end of Victoria Street lies The Glass Printery, owned by Carly and Rick Dean. Their passion for glassware and ceramic printing has brought them to this perfect spot in the midst of Cambridge's thriving community.

Looking back to where the business started, Carly and Rick Dean's story is one of resilience and determination in the face of adversity.

Carly and Rick originally launched their business in Christchurch, specialising in glassware and ceramic kiln fired screen printing. Rick had been honing his craft since completing high school in 1993 - it's a rare skill that few possess. He'd developed a solid reputation for his skill and precision, and with years of hands-on experience, his expertise and passion set him apart in the industry.

Carly says the business in those earlier days was behind the scenes, relying on Google, marketing and hospitality companies without a public face. They did not directly offer their services to the public.

Then the 2011 earthquake hit Christchurch, and with the family's business and home destroyed, the couple





“We’re small and boutique, the public can come in and customise a product, and we also offer giftware designed and printed in-house. It’s a lot of fun.”

embarked on a journey north, and destiny led them to Cambridge.

“We’d been on a road trip to the North Island just before the earthquakes and loved Cambridge’s community village feel,” says Carly.

“We had family in Hamilton and Tauranga, so that’s how we ended up here. I was here within a week of the 2011 earthquake, along with the kids and the animals, and Rick followed three months later,” she says.

Building a new home in Te Miro, Carly and Rick immersed themselves in Cambridge’s thriving environment.

The move provided them with the opportunity for more personal connections, bridging the gap between their craft and the community they serve.

A homecoming of artistic ingenuity

With Carly, Rick, and their teenage children finding solace in Cambridge, it prompted them to seek a fresh start in business.

Here, Carly and Rick fused their talents to re-design and re-launch The Glass Printery in 2015, a haven for fully kiln-fired screen printing of glassware and ceramics.

While Rick handled the tools, Carly took charge of operations, sales, and marketing to guarantee a smooth and hassle-free experience for their customers.

Operating the business out of premises on Matos Segedin Drive, Carly says it was relatively easy to rebuild the customer database after reconnecting with previous business contacts and cold calling new prospects. Due to Rick’s years of knowledge and skills in this very specialised trade, it was a smooth and successful transition.

“Business grew quickly, and we became quite a large setup. We would be continually asked by wineries and breweries to print on a larger scale, for example, 20,000 bottles. However, we didn’t have the kiln capacity to cope. We also knew that no other business in New Zealand could print high volume to this scale, and they would need to approach international printers,” Carly explains.

“We reached a crossroads when we were seriously considering building a large UV printing plant so we could offer higher volume. Just before committing to a new lease, it just didn’t feel right. So we moved our business into our large garage and sleep out at our newly built home in Te Miro and took time to rethink what direction to take - and that’s when Covid hit,” she adds.

“Business quietened down during this period. That’s when we set up our online shop, ‘Glass Pimps’”

Rick and Carly designed a range of Covid novelty glassware - just for a laugh - and just as the country was going into full lockdown, they pushed their range and online shop on social media.

“The orders were absolutely crazy – dozens were coming in daily. It was an exciting time, but it was a challenge without staff and our regular suppliers not operating. But after wheeling in family within the same bubble, we managed.”

Then Rick and Carly made a strategic decision to shift their focus towards the general public as a target market. As a result, they opened their current workspace on Victoria Street that catered to the





public, whilst also maintaining their commercial printing operations on a smaller scale.

“We’re small and boutique, the public can come in and customise a product, and we also offer giftware designed and printed in-house. It’s a lot of fun.”

In Winter 2022 the self-confessed coffee fanatics introduced their espresso bar, and now customers can browse the showroom while they enjoy their coffee.

“Cambridge is such a friendly and supportive town. We’ve become good friends with a lot of our customers. In the morning, it’s a little bit like Friends in here – it has that vibe. We’re pet friendly too.

“In the future, we’d love to open a lounge bar offering live acoustic music and a place to have a pre-drink or after-drink. At night our building is a really cool place with the lighting and plants, so we’ll be looking at how we can make that happen,” she says.



Three things to know about The Glass Printery

1. Quality craftsmanship meets cutting-edge technology

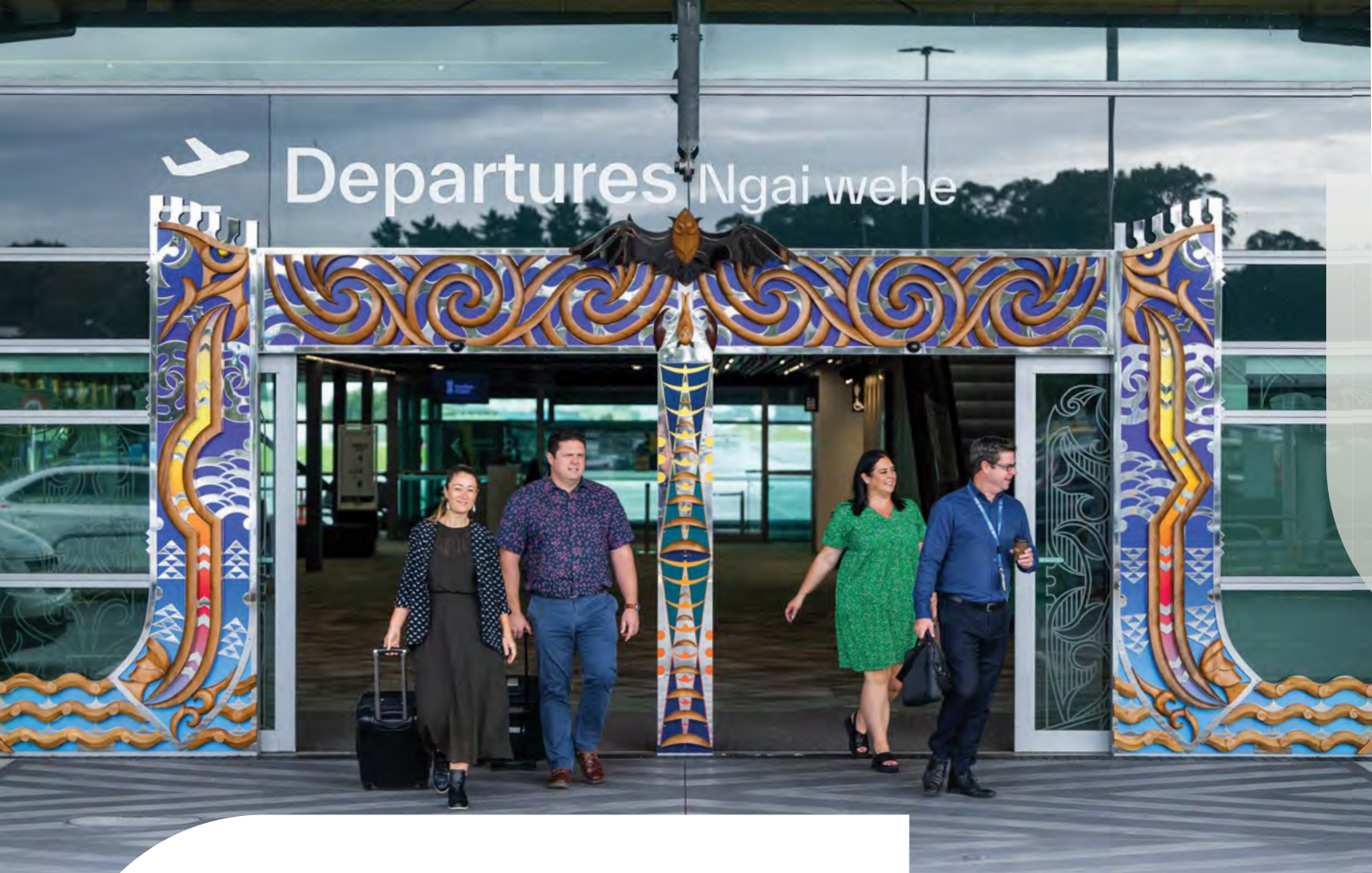
Rick’s custom-engineered machines, designed specifically for their printing needs which apply prints directly onto cylinder-shaped glass and ceramics. The pieces are then kiln-fired, resulting in a scratch-resistant, permanent finish that withstands the test of time. Their dedication to the artistry of printing sets them apart, offering a level of craftsmanship that digital printing cannot replicate.

2. Collaboration and customisation

The Glass Printery takes immense pride in giving each logo or design a unique and professional treatment. Rick’s skills in artwork design and product branding, and Carly’s skills in product selection ensure that every aspect of the client’s vision is fulfilled. With their personalised approach, they strive to ensure that every print reflects the client’s personality, leaving a lasting impression.

3. The Glass Printery Experience

Carly and Rick’s dedication to their craft extends beyond their printing expertise. Their participation in trade shows and conferences throughout New Zealand allows them to connect with like-minded people passionate about wine, beer, and food. These events serve as platforms for showcasing their exceptional glassware for winemakers and growers for brewers while indulging in the industry’s diverse flavours.



Hamilton Airport, a vital gateway

Hamilton Airport is where people from around New Zealand and the world come together, pathways cross, and new connections are formed.

Hamilton Airport proudly welcomes visitors to the mighty Waikato through its recently refurbished and seismically strengthened terminal.

Drawing on Waikato's rich cultural history and natural environment, the terminal's vibrant makeover references the long-tailed native bat (pekapeka tou-roa), which is found in our region, through spatial design, brand identity and cultural expression. Traditionally gifted to travellers, carved pekapeka offer manākitanga and protection, a beautiful parallel with the care provided to customers. The airport's new design also incorporates the rich symbolism of the Waikato awa, the local maunga (sacred mountains) and the natural colour palette of the region.

A plush new departure area with contemporary fittings, carpet, dedicated workspaces and powered furniture allows travellers to relax, charge their devices and catch up on work before heading off on their journeys.

On arrival at Hamilton Airport, visitors can check out cultural art pieces by local Māori artists. These commissioned works enrich the terminal, offering a sense of connection to people, place and identity. The carved kauri timber and stainless steel waharoa (entranceway) is a crucial feature of the Hamilton Airport arrival experience and invites people to enjoy the safety and manāki of the terminal.



Once inside, look for the following:

- The warm and calming woven panels of harakeke (flax) on the ceiling above the arrival/departure gate
- The depiction of the pekapeka's unique sonar and echolocation abilities on the glass surfaces
- The manu atu or Māori kite that represents safe travels to wherever your journey takes you and a warm welcome back home
- The large, round contemporary sculpture at the end of the terminal, made of island kauri, evokes our region's mana (greatness)

“Upon landing in Hamilton, you’ve arrived in a special region, rich in cultural tradition.”

Mark Morgan,
Group Chief Executive, Waikato Regional Airport Ltd

Outside the terminal, you’ll see the woven-inspired timber cladding and sandblasted detailing of the pekapeka design.

Hamilton Airport’s new branding incorporates its tohu (symbol/mark), symbolising both the waharoa (gateway) and runway. A gateway between worlds (land, sky, spiritual realm), it offers respect, generosity, and care to all who travel. It stands tall with pride and reaches out to welcome visitors.

Comfort and convenience

Dine at Propeller Airport Café on the mezzanine floor for delicious fresh meals and barista-made coffee. Quench your thirst at the fully licensed bar, or grab some snacks and travel accessories. The regional lounge is on the mezzanine floor.

The car park is conveniently located near the terminal. If you have extra time, check out Propeller Bar & Restaurant at Hotel Hamilton Airport for a tasty meal.

Hamilton Airport is well-connected with multiple direct daily flights to Wellington and Christchurch and regular flights to Palmerston North with Air New Zealand and Originair.

The airport is only a 15-minute drive to Cambridge, and multiple transport options are available from just outside the terminal.

Kia Ora, and welcome to Hamilton Airport: a vibrant hub with a rich history and a brave future.

JETPARK

HAMILTON AIRPORT HOTEL
& CONFERENCE CENTRE



Experience the Best of Contemporary Dining at Propeller Restaurant & Bar

Propeller Restaurant & Bar is the perfect destination for those seeking a modern dining experience. With a spacious and stylish bistro restaurant, guests can enjoy their meals in a comfortable and refined setting. For those who prefer the fresh air, the restaurant also boasts a charming outdoor seating area, making it the ideal spot for a relaxing evening with friends and family – even the furry ones.

At Propeller Restaurant & Bar, we believe in using only the freshest and highest quality ingredients.

Our menu features a selection of dishes made from locally sourced produce, ensuring that each dish is bursting with flavor and nutritional value.



Savor a range of delicious meals prepared by our expert chefs and experience the warm hospitality of our friendly staff open 7 days a week. Whether you're starting your day with a hearty breakfast, taking a midday break to enjoy lunch, or looking for a memorable evening meal, we cater to all.

Call 0800 336 866 to make a reservation
www.jetparkhamilton.co.nz/dine/

Educational opportunities abound in Cambridge

Cambridge has a reputation for excellent schools and early childhood centres, something which draws new families to the town.

Whether it's early childhood, primary, intermediate, or high school education, Cambridge is a great place for young people to learn, follow their dreams and fulfill their potential.

Laying the foundation for success early on

Cambridge offers a range of early childhood education (ECE) services including kindergartens, early childhood centres, playcentres, kohanga reo and home-based education to help shape young minds.

With diverse educational programmes, children can explore their curiosity, imagination, and passion for learning through play. The early childhood education centres in Cambridge have passionate educators and excellent facilities, providing a strong foundation for your child's education.

On the outskirts of Cambridge is also The Forest ECE and Te Miro Forest School providing early childhood education in the forest for children from three to six years old, and one-day programmes for children from age five to 13 years.

Starting school, first steps

Finding the right primary school for your child is easy in Cambridge, as every school here is exceptional. Our primary schools prioritise learning by creating a nurturing and engaging environment for students, where they develop vital skills such as numeracy and literacy, critical thinking, collaboration and a sense of community.

Using the curriculum as their guide, Cambridge primary school teachers support students from new entrants through to Year 8 in their academic, social, cultural, and emotional growth. Students are encouraged to explore their interests and talents through extracurricular activities and enrichment programmes, with plenty of cultural and sporting opportunities here in Cambridge.



Golfing, St Peter's Cambridge

Cambridge East School, Cambridge Primary School and St Peter's Catholic School are located in the heart of Cambridge, while Leamington Primary is nestled in a convenient location alongside the greenbelt in Leamington. Goodwood School and Hautapu School are situated on the northern side of Cambridge, about 10 minutes from the main town centre.

Rural schools include Kaipaki School, Roto-O-Rangi School, Karāpiro School, Te Miro School, Horahora School, and Pukerimu School. In these schools, students can experience the perks of small class sizes, personalised attention, and a close connection to nature. They prioritise the rural lifestyle while maintaining a high level of education, promoting a strong sense of belonging and community spirit.

Most local primary schools are zoned, so contact the school directly for enrolment criteria and information.

Through the middle years

If you're looking for a middle school in Cambridge, you have lots of great options. Each one provides innovative teaching methods, project-based learning, and diverse extracurricular activities to cultivate a love for learning. The teachers at all schools are skilled and caring, fostering critical thinking, collaboration, and a growth mindset in their students.

Cambridge Middle School offers a unique educational structure only found in a few New Zealand schools. It caters to students in Years 7 to 10, and provides a comprehensive curriculum that prepares them for their future endeavours.



St Peter's Cambridge, St Peter's Catholic School, Horahora School, Te Miro School, and Kaipaki School all offer Year 7 and 8 classes that smoothly transition children into secondary school.

Regardless of which intermediate school you choose, you can be confident that your child will receive a high-quality education and a solid foundation for their future in Cambridge.

St Peter's Cambridge

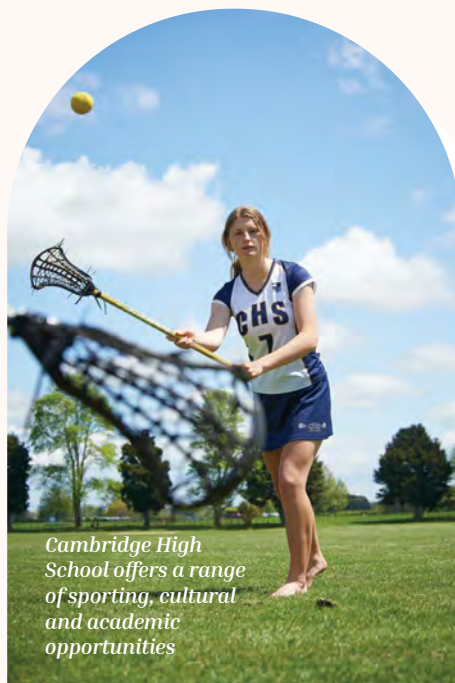
For those looking for a unique educational experience, St Peter's Cambridge offers an internationally recognised education. It is the largest co-educational boarding school in New Zealand, and the only school in the central North Island that provides the International Baccalaureate as an alternative to NCEA.

With a focus on academic rigour, character development, and holistic growth, St Peter's Cambridge provides an excellent learning environment for students from around the world. The school's internationally renowned academic programme is complemented by exceptional sports and arts facilities, allowing students to pursue their individual passions and talents.

Whether excelling in academics, honing athletic skills, or exploring artistic endeavours, St Peter's Cambridge provides the necessary resources and support to help its students reach their full potential.

Cambridge High School

At Cambridge High School, you'll find a diverse community of approximately 1,800 students with access to various academic, cultural, and sporting opportunities. Modern facilities are complemented



Cambridge High School offers a range of sporting, cultural and academic opportunities

by a forward-thinking education programme that blends traditional values with a high standard for student achievement.

The curriculum is designed to provide a holistic approach to education, offering a wide range of subjects that encourage students to explore their interests during their junior school years (Year 9 and 10). As students progress to their senior school years (Year 11 to 13), they can specialise in courses that will prepare them for success beyond their high school years.

Tertiary opportunities are just 20 minutes away

Living in Cambridge puts you within reach of many excellent tertiary education opportunities. The University of Waikato, just off the Ruakura Interchange on the Waikato Expressway, offers a wide range of subjects at undergraduate, master's and post-graduate level. Also in Hamilton, Wintec Te Pūkenga provides some great opportunities to learn and grow a new skill or career. Students can benefit from access to top quality facilities, experienced lecturers and tutors, and world-leading research opportunities to prepare them for successful careers.

Nurturing our next generation of champions

In Cambridge, education goes beyond the classroom. The town's strong sense of community, commitment to excellence, and nurturing environment lay the foundation for a bright future.



St Peter's Cambridge



Cambridge High School



Te Awa
Lifecare

A retirement dream

As the golden years beckon, finding the perfect place to retire is a top priority.

Cambridge has long been a popular destination for retirees for so many reasons - its picturesque charm, stunning scenery, lively community, local support networks, convenient location, and a full range of retirement and care options.

Cambridge is a popular choice for retirees who have families living in Auckland, Tauranga, Rotorua, and Taupō due to its close proximity to these areas.

From the affordable to the luxurious and everything in between, Cambridge caters to the varying needs and preferences of older residents.

For those seeking affordable retirement living, Waipā District Council offers a number of pensioner housing units in central Cambridge and Leamington, with a rent option that suits individuals looking for flexibility and cost-effectiveness. Cambridge Resthaven also offers flexibility through a service fee option.



On the other end of the spectrum, Te Awa Lifecare provides the epitome of luxury retirement living, ensuring every resident enjoys the finest amenities and services, with designer villas and cottages ranging from 80-250m², and superb on-site facilities.



Cambridge Oaks offers lifestyle living for people from 50 and above. Residents are catered for in their own privately-owned modern dwelling with beautiful gardens and a well-appointed community centre in the hub of the village.

Meanwhile, Lauriston Park by Avida, MetlifeCare St Andrew's, Cambridge Resthaven, St Kilda Retirement Village, Ryman Healthcare and Summerset, offer a range of villas, cottages, townhouses, and serviced apartments, all conveniently located with a full range of facilities and services to support residents.



Live the lifestyle you deserve

Waikato's finest retirement village situated in a beautiful rural setting at Cambridge.

We offer two or three bedroom villas and serviced cottages individually designed by our resident architect. Our residential care suites and care cottages offer superior rest home and hospital level care. The Homestead provides boutique residential dementia care in a home-like environment.

Phone today for an appointment to view on 07 827 6103.

1866 Cambridge Road, Cambridge | mandy@teawalifecare.nz | www.teawalifecare.nz



Understanding that some people may require different levels of assistance, the town offers an impressive range of care options for retirees with specific healthcare needs. Lauriston Park, Resthaven, St Kilda Retirement Village, Ryman Healthcare, Te Awa Lifecare and Summerset all provide rest home, hospital and specialist dementia care tailored to individual needs.

Cambridge's appeal for retirees is enhanced by its safe, welcoming community and opportunities to connect with new friends. Residents can enjoy an abundance of outdoor activities like sports, group fitness, golf, cycling and walking to maintain an active lifestyle. Other social activities Cambridge retirees enjoy include book clubs, theatre, creative fibre and other arts, and music.



The town's rich cultural heritage is celebrated through various events and festivals, fostering a vibrant atmosphere where retirees can engage in community initiatives and make meaningful connections.

TOTALLY LOCALLY CAMBRIDGE RESTHAVEN

We are Cambridge's 100% community-owned retirement village.

Built by the community, for the community, our ethos is to provide exceptional independent living and care options.

We welcome you to our friendly, family-oriented retirement village and care centres to live in comfort, enjoy life and be treated with dignity and respect. Come and see for yourself all that Cambridge Resthaven has to offer.



Retirement Village & Apartments on Vogel 6 Vogel Street
Care Centres 6 Vogel Street & 170 Burns Street

**100%
COMMUNITY OWNED**

For further information, phone 07 827 6097 or visit www.resthaven.org.nz



Family focused GPs

Catering to all needs and ages,
supporting every aspect of health



Acute care



Child health



In-house clinical pharmacist



Men's health



Mental health



Sexual health



Minor surgery



Sports medicine



Stop-smoking programme



Travel medicine



Women's health

Medical Centre • Laboratory • Pharmacy
Radiology • Visiting Specialists
Physio and Podiatry Nearby



**CAMBRIDGE
MEDICAL CENTRE**

P: 07 827 7184
E. info@cambmedcentre.co.nz
48 Alpha Street, Cambridge
www.cambmedcentre.co.nz

Community groups ignite connection and purpose

The flourishing Cambridge community owes much of its vibrancy to the clubs and groups that bring people together and encourage meaningful connections.



Cambridge is home to a large variety of organisations that foster a sense of belonging and bring people together. They cater to diverse interests and offer personal growth, philanthropic opportunities, and a chance to connect with like-minded individuals.

Whether you're a new resident or a long-time member of the community, joining these groups is an excellent way to make new friends, discover shared interests, and contribute to your local community.

Rotary Cambridge and Lions Club of Cambridge

Rotary Cambridge and Lions Club of Cambridge are well-established clubs that embody the strong and compassionate community spirit that makes Cambridge an exceptional place to live.

Rotary's "Service Above Self" motto focuses on humanitarian efforts and community service projects. This well-respected local group supports many community projects including, recently, the Garden Festival, Bookarama, Waipā Fun Run, Rotary Cambridge Urban Miners, the local fitness park on Thornton Road, a charity dinner, offering blood pressure checks, volunteering at the NZ Blood Service collections, and the Adventure Club.

The Lions Club of Cambridge embodies the spirit of service and generosity of our community-minded town. Their dedication to improving Cambridge's quality of life is inspiring.

The Lions Shed, located on Vogel Street, is a shining example of their commitment to giving back. They support local initiatives that promote health, the environment, and youth development by selling high-quality donated goods and items. Every purchase made at the Lions Shed goes directly back into our community, making a real difference in the lives of those around us.

And let's not forget about the Trash 'N' Treasure Market! For 25 years, the Lions Club of Cambridge has been organising this special monthly event that brings together residents and visitors to discover affordable treasures and unique knick-knacks.



Octopus for a Premie

Empowering lifelong learning for older residents

Three more community clubs that are worth mentioning are Rebus, U3A, and The Lyceum Club. The Rebus Club of Cambridge is for retirees who wish to keep minds active, expand interests and enjoy the conviviality of new friends and acquaintances. The group meets on the second Thursday of each month at the Baptist Church, Queen Street, Cambridge at 9.45am. Similarly, U3A and the Lyceum Club are excellent places for members passionate about lifelong learning. They can participate in various interest groups, learn from experts in different fields, and form friendships with a diverse community of like-minded individuals who share their love for personal growth and knowledge.

Cambridge Community House

Cambridge Community House is a wonderful charity organisation passionate about fostering personal, family, and community wellbeing in Cambridge. They offer a variety of support services, from counselling to family-related assistance, budgeting guidance, and access to essential community resources.

Their dedication to being there for community members through the ups and downs of everyday life sets them apart. They always go the extra mile to ensure that children have school uniforms, job applicants have the support they need, and immediate food needs

Interlock



are met. As advocates, they collaborate with other organisations to provide their clients with the best care.

Supporting people with disabilities

Interlock is a registered charitable trust that was established in 2020. This amazing local organisation is dedicated to empowering individuals with disabilities through sports and recreation. The staff and volunteers work tirelessly to create inclusive opportunities for people of all abilities to participate in various activities, fostering a sense of belonging and joy. Interlock has become a beacon of hope and inspiration in Cambridge due to its unwavering commitment to inclusivity. Through its programmes, Interlock helps people with disabilities to develop the confidence and skills they need to connect with their community. Another fantastic local initiative is Cambridge Riding for the Disabled, which is celebrating 40 years of providing therapeutic riding activities to the community.

Bringing the magic of Christmas to town

The Cambridge Christmas Festival team helps usher in the magical festive spirit that sweeps through our town every year. This dedicated group works tirelessly to organise various community events and celebrations, bringing joy to young and old alike during the holiday season. The Cambridge Christmas Festival has become a cherished tradition, fostering a sense of unity and warmth within the community. All funds raised by the Cambridge Christmas Festival go back into community initiatives.



The Cambridge Christmas Festival

Looking out for local families

Raising a child can be a challenging journey for parents and caregivers. However, our community is fortunate to have local organisations like the Cambridge Parents Centre, Cambridge Toy Library, Cambridge Lifeskills and Octopus for a Premie that provide essential support.

For more than 30 years, the Cambridge Parents Centre has been a valuable resource for parents, offering a wealth of educational, resources, and support networks. Through a safe and supportive environment, the Cambridge Parents Centre installs confidence and capability in parents as they navigate

The Waipā Fun Run



The Gaslight Theatre



the joys and challenges of parenthood, including providing pregnancy and childbirth guidance and support programmes. Whether you are a new parent seeking guidance or an experienced caregiver looking for new strategies, this organisation empowers you to make informed decisions for your family.

Another great initiative available locally is Space, where you and your baby can connect with other new parents and their babies. Each week you'll explore parenting and children's development in a safe, facilitated environment, giving you and your baby the chance to make real connections during your baby's first year. Head to www.parentingplace.nz/courses/space for more information.

Next door to the Cambridge Parents Centre on Taylor Street is the Cambridge Toy Library, a not-for-profit community organisation run by an enthusiastic group of volunteers. The toy Library offers a variety of toys, games and puzzles for borrowing, promoting sustainable and educational play experiences from birth to six years old. A range of toys for special needs children is also available.

Cambridge Lifeskills offers free counselling services for younger people in Cambridge via the 13 public schools – funded by our community and grants received.

The Octopus for a Premie NZ Charitable Trust focuses on supporting parents with premature babies throughout New Zealand. This group of volunteers provides crocheted Octopals to premature baby in hospitals across the country, made using specific materials that can be safely washed at high temperatures. These Octopals are not toys but comforters and soothers for premature babies, providing tremendous benefits to babies and their families. Over 1600 Octopals handmade by 55 crocheters have been gifted to neonatal units across New Zealand.

Station 44



The Gaslight Theatre

The arts are a beautiful way to unite people, and Cambridge is fortunate to have a vibrant local theatre scene. The Gaslight Theatre is a standout gem in this community, providing a platform for local talent to showcase their skills. From classical to contemporary productions, this theatre is a testament to the power of performing arts in uniting and fostering a sense of community pride.

A joy for crafts

For those who enjoy working with creative fibres, Taylormade is an excellent resource. This local crafts and sewing group brings together like-minded people to share their skills, ideas, and inspiration. Members collaborate on various projects, which promotes creativity and helps to build solid and meaningful friendships. Taylormade is not just about making beautiful items; it's about fostering a vibrant community spirit.

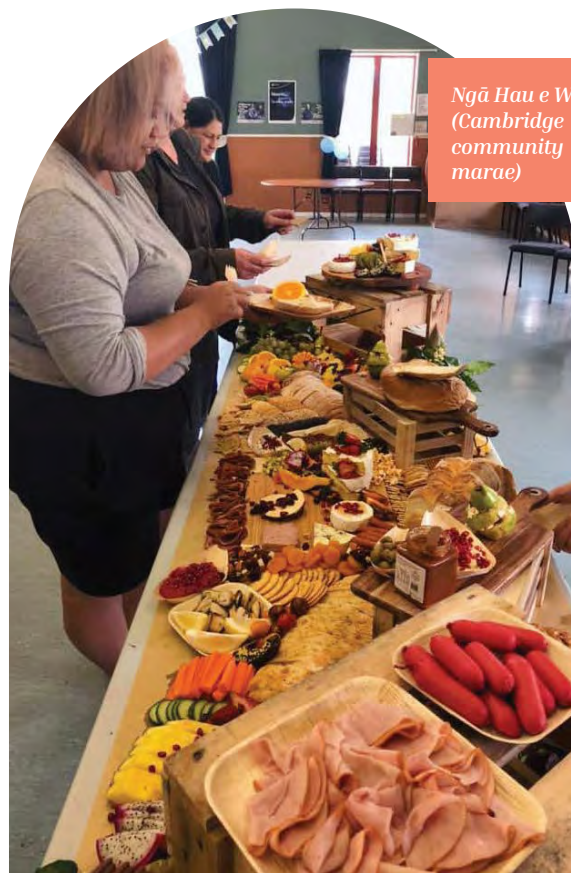
Cambridge Community Marae

Ngā Hau e Whā (the Cambridge Community Marae) is located within the iwi boundaries of Ngāti Korokī Kahukura, Ngāti Haua and Ngāti Wairere. It serves as a cultural and social centre for Māori and hosts various events, workshops, and celebrations to honour their heritage.

Citizens' Advice Bureau, St John and Cambridge Fire Brigade

In addition to other essential support systems, the community benefits from St John, Cambridge Volunteer Fire Brigade, and the Citizens Advice Bureau (CAB).

Both St John and the fire brigade are committed to providing emergency response and healthcare services to the community in times of need. Both organisations exist locally because of the tireless efforts of volunteers.



**We're here
for you in your
time of need**



Health Shuttle

Stress-free and straight forward

St John Health Shuttle is a community service that transports people with health or mobility issues to medical and health-related appointments and then brings them home again. These appointments include hospital, dental, optometrist, counselling and podiatry visits. Phone us on **0800 846 9992**.

Caring Callers

Everyone needs a friend to talk to

Caring Caller is a service St John provides for people who live alone or feel a bit lonely. Our volunteers phone clients regularly to check that everything is ok, and asking about your day can make all the difference to how you're feeling. Phone **0800 000 606** and let's get talking.

Medical Alarms

Providing peace of mind at home

Our medical alarms connect directly to St John, providing peace of mind to support people with a medical or physical condition. Live life with confidence and should you need it help available at a press of your alarm. Phone **0800 50 23 23** to arrange a free-in-home demonstration with one of our St John representatives.

**Hato Hone St John Cambridge | 16 Fort St, Cambridge
Phone 07 823 1386 | www.stjohn.org.nz**



The Cambridge little library

The CAB guides individuals on their rights and obligations, empowering them to make informed decisions and take necessary actions. This free and independent service is available to all residents and aims to promote positive social change within communities and society. The CAB helps people access essential services and provides the necessary confidence and support to navigate various issues.



Taylor Made

CAMBRIDGE
TOWN
HALL

A space to inspire

The historic Town Hall exists as a “Village Heart” to serve and inspire the entire community.



Host your own historically epic event at the Cambridge Town Hall or simply visit and enjoy!
e.info@cambridgetownhall.co.nz www.cth.co.nz

WHARE
TAPERE OO
TE OKO HOROI



Cambridge Raceway

est. 1919

Harness Racing



Cambridge Raceway is steeped in history, from humble beginnings as a trotting club over a century ago it has built on its heritage and evolved into a multipurpose entertainment venue whilst remaining the home of Harness racing in the Waikato.

The raceway hosts around 30 Waikato-BOP Harness Racing meetings per year. These meetings are open to the public and a great unique night out, with range of hospitality options available.

Events & Venue



Cambridge Raceway aims to create unique experiences that exceed our clients' expectations. We have a wide range of indoor and outdoor venue spaces to cater for groups of 6 -300 to suit any occasion. Our dedicated events team have great attention to detail and will go the extra mile to make your event a success.

Food & Beverage



Off The Track Food & Bev catering company cultivates exceptional culinary events in the Waikato. Based at Cambridge Raceway, we craft wholesome, hearty & flavourful cuisine for events at Cambridge Raceway and the wider Waikato.

We go above and beyond to create unique and thoughtful cuisine that brings people together to eat, drink and share the moment.

A place to nurture your wellbeing



Fat Bottomed Girls, Cambridge

Moving to a new town can be an exciting adventure, but it can also be overwhelming as you adjust to a new setting.

Luckily, Cambridge offers an abundance of health and wellness choices, ranging from general practice care, physiotherapy and osteotherapy, to podiatry, dentistry, health and fitness, and relaxation services.

General practice and community care

Our town is home to modern medical centres staffed by skilled healthcare professionals. General practices include Cambridge Family Health, Cambridge Medical Centre, Dr K Pillay Ltd, Duke St Health & Medical, Dr N.P.E Schofield, and Leamington Medical Centre.

An additional practice is set to open in Hautapu to meet the needs of our community.

We also have several excellent pharmacists in town to support your and your family's health. They can provide advice and treatment for common minor illnesses for all ages. Services provided include immunisations, smoking cessation advice, specialised wound care, disability aids, medicine reviews and more.

Additionally, the presence of a hospital nearby, combined with many local rest homes with hospital-level care (read more on page 40), our community has comprehensive healthcare services for residents of all ages.

Allied health professionals in Cambridge

From chiropractic care to audiology services, specialist centre, foot clinics to physiotherapy, Cambridge is home to a diverse range of expert practitioners dedicated to enhancing your individual health and wellbeing.

Discover the healing touch of Waikato Chiropractic, Cambridge Chiropractic Clinic, Align Health Cambridge, and Cambridge Physio & Acupuncture Clinic, or engage in a more holistic approach to healing at Cambridge Osteopathic Clinic. There's also the Body Performance Clinic, which is a musculoskeletal physiotherapy and rehabilitation clinic, and provides cancer rehabilitation with the Pinc and Steel programme.



Body
Performance
clinic

Massage therapy

Skilled local massage therapists offer various techniques such as traditional Thai massage, Swedish, sports, myofascial, deep tissue, and trigger point massage to help relieve muscle tension, stress, and promote relaxation. You can personalise your experience based on your individual needs.

Find hearing solutions with Bloom Hearing Specialists, Bay Audiology, Triton Hearing, HearMe and Wolfe Hearing. Trust your foot health to Cambridge Foot Clinic, TrigirlVicki Coaching & Podiatry Plus NZ and In-Step Podiatry Services. Whatever your needs, you will experience exceptional care and reach new levels of wellness here in Cambridge.

Dental health

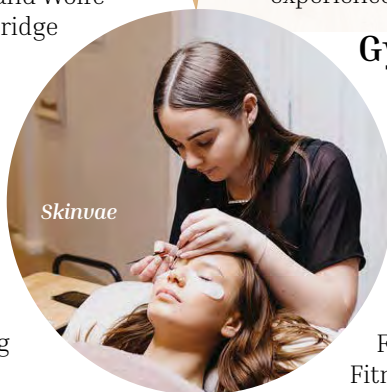
Experienced dentists at various clinics provide comprehensive services ranging from routine check ups to cosmetic dentistry. True Alignment Orthodontics offers orthodontic services, while Cambridge White, Cambridge Smile Centre, Riverside Dental Care, Lumino the Dentists – Leamington Dental, Cambridge Dental Practice, and Gentle Dental Cambridge offer general dentist services.

If you have children, free oral health care is available at the Cambridge Community Dental Clinic, which is run by Te Whatu Ora – Health NZ's local community oral health service. They provide dental checks and decay prevention and repair services for children from birth until their 18th birthday.

It's important to prioritise your oral health, and these clinics are here to help ensure your child's smile remains radiant.

Yoga and pilates

Yoga and pilates studios dot the town, providing a sanctuary for those looking to enhance their physical and mental wellbeing. Whether you're a seasoned practitioner or a beginner, these studios offer a range of classes tailored to various skill levels and preferences. From gentle flows to challenging poses, you'll find an abundance of options to nurture your body, mind, and spirit.



Skinvae

Gyms and fitness centres

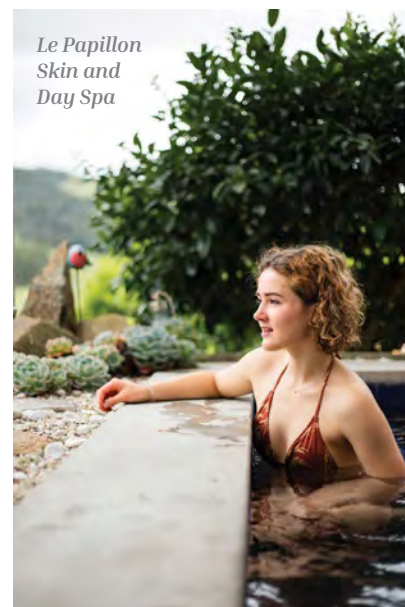
Get ready to tap into your inner strength and achieve your fitness goals in Cambridge. Whether you're a fitness enthusiast or just starting on your wellness journey, there are plenty of options available. You can choose from well-equipped fitness centres like Anytime Fitness, Flex Fitness, Snap Fitness, Femme Fit 50, and Cambridge Fitness, some of which offer 24/7 access.

For dynamic group training, check out Cambridge Fitness, F45, STM Fit, the Velodrome Gym, BFT, or Flex Fitness, and get your heart pumping. With so many options available, you're sure to find the perfect fitness haven to suit your needs in Cambridge.

All local gyms provide a motivating atmosphere, quality equipment, and will help you discover the joy of movement to boost your energy, and unlock your full potential.

Retreats and spas

If you're looking for a bit of pampering, Cambridge has several day spas that offer luxurious treatments to rejuvenate your body and soul. You can enjoy a variety of services, such as massages, facials, and body treatments that are designed to alleviate stress and promote relaxation. These tranquil havens provide a perfect getaway from the hustle and bustle of your daily routine.



Le Papillon
Skin and
Day Spa



Body Performance Clinic is a musculoskeletal physiotherapy and rehabilitation clinic. Specialising in client focused, evidence based, quality treatment and rehabilitation. Our focus is on active treatment and client education.



PHYSIOTHERAPY

PHYSIOTHERAPY

- Manual therapy and joint mobilisation
- Acupuncture and dry needling
- Strapping and taping
- Exercise based therapy
- Post-surgical rehabilitation
- Prehabilitation programmes
- Sporting injuries and recovery
- Overuse and repetitive strain injuries



EXERCISE THERAPY

EXERCISE THERAPY

- Physio-led Pilates
- Yoga
- Onsite rehabilitation gym
- Rowing Biomechanical Assessment
- Running Biomechanical Assessment
- Return to work Functional Strengthening Programme



MASSAGE THERAPY

MASSAGE THERAPY

- Relaxation Massage,
- Sports Massage
- Pregnancy Massage
- Therapeutic Massage

REGISTERED PROVIDERS FOR:



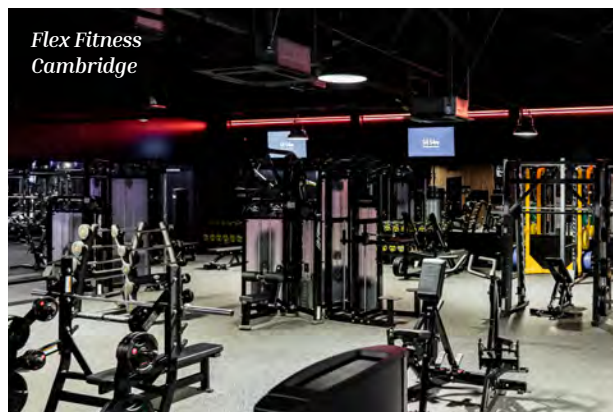
PROUD TO SUPPORT:



Skinvae and Loulous Salon and Day Spa are conveniently located in the Cambridge central business district, while Le Papillion Day Spa and Zen Medi Spa and Wellness are set with a gorgeous rural outlook within a 10-minute drive from town.

If you have a few days to dedicate to your wellbeing, then Resolution Retreats might be just what you need. Located just out of Cambridge, they offer a peaceful escape for women to focus on themselves, recharge their batteries and establish health and wellbeing routines. This gorgeous retreat is all about making progress, not being perfect, and they'll give you practical tools to help you feel happier and healthier.

With all the care that goes into every aspect of the experience, it's no wonder that Resolution Retreats was named New Zealand's Best Wellness Retreat in the 2022 World Spa Awards. From delicious meals to luxurious private accommodations and educational workshops, this retreat is the perfect opportunity to relax, reset and invest in healthier habits.



Corner of Queen and Albert Street, Cambridge
 p: 07 823 1263 www.bodyperformance.co.nz

The magic of the maunga

Rising above Lake Karāpiro, an ancient forest blankets the slopes of one of the largest pest-free sanctuaries in the world.

Protected by a 47 kilometre long pest-proof fence, Sanctuary Mountain Maungatautari is home to many of New Zealand's most endangered native birds, rare species such as tuatara, giant wētā, frogs, bats and more than 2,000 kiwi.

The ambitious project was established in 2001 when Maungatautari was made a reserve and restorations began with the vision to eradicate all mammalian pests.

Today, the sanctuary is an example of what our native forests would have looked and sounded like before humans arrived. Alive with birdsong and rich in biodiversity, the maunga provides a window into what predator-free bushland can look like.

Just a 30 minute drive from Cambridge, you can explore its many walking tracks, take a guided tour run by local volunteers or experience an introduction to traditional Māori medicine through a rongoā rākau tour.

As well as hosting school groups to educate rangatahi on conservation, Sanctuary Mountain has a rich calendar of events for the public including working bees, school holiday activities and a wellbeing programme with meditation, forest serenity days and more.



Photo credit: Nature and Nosh

Nature inspires office execs

On Maungatautari, a secret path leads to a hidden location where you'll find the country's first outdoor boardroom nestled under native canopy. The Bush Boardroom was designed as an open-air office space in the middle of the forest. It's a novel concept for companies wanting to bring their teams into nature for special strategy sessions or an offsite day outdoors, supported with mindful hiking, wild food foraging and nature feasts.

Bush Boardroom founder Kylie Rae says she was inspired during the first Covid-19 lockdown to find a way to get more people into nature. "After spending so much time isolated and tied to screens, we saw this huge increase in anxiety and burn out. I know from experience how spending time in nature can help with both prevention and cure."

Scientific research shows that time spent in nature reduces stress, lowers blood pressure, improves mood and can even boost creative thinking.

Rae partnered with Sanctuary Mountain to bring her idea to life, hosting corporate groups and contributing to their conservation efforts through these unique experiences.

For those interested in getting more involved, volunteers with broad skills are always needed to help with a wide range of tasks including planting, maintaining trap lines and tracks, hosting and guiding.



The Kiwi gathering showcasing the best of agriculture



Head down the road to Mystery Creek each June, and you'll discover a truly iconic event – Fieldays – where Kiwis put New Zealand's primary sector on the global stage.

For over 50 years, Fieldays has been the epitome of collaboration and progress, bringing together farmers, innovators, students, enthusiasts, and career seekers. It's an event where rural and urban worlds unite, offering a first-hand glimpse into the latest advancements in the industry, and, equally important, a place to meet up with friends and family after a busy year.

Since its humble beginnings in 1968, Fieldays has grown into a bustling hub of collaboration and progress and is well-attended, no matter the weather.

Innovation is the beating heart of Fieldays. The event is a stage for showcasing revolutionary technology that is transforming the agriculture sector. At Fieldays, you can witness futuristic machinery operating autonomously, smart farming systems that maximise efficiency, and advanced genetics that are redefining the possibilities of farming. Fieldays combines efficiency, productivity, and sustainability in harmony.

“Fieldays remains the Southern Hemisphere’s largest agricultural event. It’s the ultimate launch platform for cutting-edge technology and innovation.”

One of the best things about Fieldays is the sense of camaraderie and connection it fosters. Farmers, entrepreneurs, researchers, and industry leaders come together to exchange ideas and forge lifelong friendships. It's a marketplace of ideas, where collaborations are born, and partnerships thrive.

Fieldays demonstrates the immense potential of the agriculture sector and welcomes all those who share a passion for sustainability.

Let's not forget that the Fieldays also pays homage to the rich heritage of New Zealand agriculture. It's a chance to connect with and honour the hard work and dedication of those who have built the foundations of the industry, from the pioneers who conquered the land to the present-day farmers

who continue to innovate and inspire.

Everyone is welcome at Fieldays and it promises to be a great day out for the young, the young-at-heart and anyone in-between.

Mark June in your calendars for a trip to Mystery Creek and head to www.fieldays.co.nz to get all the event details. Don't miss out on the chance to experience the ultimate launchpad for innovation, where tradition and progress unite in a vibrant celebration of New Zealand's agricultural excellence.

Property Brokers Cambridge.

Proud to be in our
community supporting:

- Hautapu Sports
- Rotary Club
- Cambridge Cricket Club
- Cambridge Pony Club
- Chamber of Commerce - Cambridge

Looking to buy, sell, invest or have your property managed?
Call us today on **07 595 0835** or go to **pb.co.nz**





St Andrew's Church
Craft & Collectable
Fair

There's always something on in Cambridge

Cambridge and its surrounding areas offer a rich tapestry of events that showcase our vibrant community spirit. From exhilarating sporting spectacles to cultural festivities, there is something for everyone to enjoy throughout the year.

To stay up to date with what's going on in Cambridge and its surrounds, head to

 whatsonwaipa.co.nz or
 cambridge.co.nz

We love cycling

Throughout the year, Bicycle Revolution Cambridge runs some great events to inspire our community to enjoy bike riding. One of these events is the Cambridge Cycling Festival, an exciting celebration of cycling held every Anzac Day. This community-focused event offers family-friendly rides, kids' races, and fast-paced street racing. The highlight of the festival is the Criterium Street Racing event, where participants race through the streets of Cambridge. With displays, relays, and a variety of rides catering to a mix of ages and skill levels, the festival promotes a healthy and active lifestyle while showcasing the scenic local landscapes.

The Bicycle Revolution organises two other community events – Urban Rolls and Bike to Sport. Urban Rolls is a relaxed Sunday afternoon bike ride bringing 150 locals together who enjoy drinks and hot chips at Good Union after the ride. Bike to Sport provides bike parking for those who choose to ride their bikes instead of driving and rewards them with a tuck-shop voucher.

The Karapiro 100K Flyer, also run by the Bicycle Revolution, is one of the most popular cycling events in New Zealand. The annual event takes place in Karāpiro during spring, and attracts more than 1,500 cyclists who enjoy racing through the rolling country roads of rural Waikato. Participants can choose from three options, including the 100 kilometre route, as well as 50km and 16km options – along with a kids' obstacle course. The event is a great way to spend a weekend, and participants have the chance to win some amazing spot prizes and giveaways. The event offers options for adult and junior solo riders, tandems, e-bikes, and options for wee ones at the Karāpiro domain.

St Andrew's Craft & Collectable Fair

Another event that captivates both locals and visitors alike is the St Andrew's Church Fair. Held in the charming grounds of the historic St Andrew's Church twice-yearly, right in the heart of Cambridge, this



fair brings together the community for a day of fun, entertainment, and goodwill. From stalls filled with homemade crafts and delicious treats to lively performances by local musicians, the fair exudes a warm and welcoming atmosphere. It serves as a platform for local artisans and businesses to showcase their talents while raising funds for charitable causes, reflecting the town's strong sense of community and philanthropy.

Book lovers rejoice

Every year, the popular Bookarama event turns Cambridge into a paradise for book lovers. This literary extravaganza features a wide selection of used books, including both classic favourites and modern bestsellers. Not only does the Bookarama encourage a love for reading, but it also supports local community initiatives and organisations through its proceeds.

From trash to treasure

If you enjoy finding one-of-a-kind items, you might want to check out the monthly Lions of Cambridge Trash 'N' Treasure Market. These lively markets have a variety of stalls selling second-hand items, antiques, handmade crafts, and more. You can search for unique items and enjoy the excitement of the hunt while promoting sustainable shopping practices.

The ultimate destination for horse lovers

Equine enthusiasts are in for a treat with the prestigious Takapoto Showjumping event. Set against the stunning backdrop of Lake Karāpiro, this world-class equestrian competition brings together top riders and horses from around the globe. Spectators can witness thrilling jumps and impressive displays of horsemanship as riders vie for victory. The event showcases Cambridge's world-famous equine heritage and attracts visitors who appreciate the grace and power of these majestic animals.

Cambridge's passion for horses is further highlighted by the renowned Cambridge Racecourse. Locals and visitors flock to the track to experience the excitement of high-stakes harness races, cheering on their favourite horses and jockeys. The thundering hooves and the electrifying atmosphere create an unforgettable experience for all who attend. Don't miss the Grins Night of Champions, which brings one of New Zealand's richest races, plus a night of revelry under the stars with great food, drinks, and entertainment.

And don't forget the Cambridge Jockey Club which offers thrilling events for horse racing enthusiasts and an exciting membership offering.

Autumn colours to celebrate

As autumn sets in, the Town of Trees comes alive in a riot of red, orange and gold colours with the Cambridge Autumn Festival. This multi-day celebration features a diverse range of events, including live performances, art exhibitions, cultural showcases, and food festivals. From captivating stage performances to engaging workshops, the festival embraces the community's creative spirit while providing opportunities for locals and visitors to come together and celebrate the beauty of the season. Enjoy the changing colours of autumn tree leaves as a backdrop to all the fun festivities!

Balloons Visit Waipā

Experience the wonder of hot air balloons in your own backyard with Balloons Visit Waipā. This amazing addition to the Balloons over Waikato festival brings a magical touch to Cambridge and Waipā communities. It's a mesmerising spectacle that's perfect for families looking for a fun, free night out. So, pack a picnic, enjoy the live band, and indulge in tasty treats from the food trucks while marvelling at the colourful hot air balloons. Balloons Visit Waipā is an exciting event that will leave you feeling inspired.

what's on
in Cambridge

Check out
www.cambridge.co.nz/events
to keep up to date with all
upcoming events.

Cnr Queen & Victoria Sts, Cambridge • 07 823 3456 • www.cambridge.co.nz

CAMBRIDGE
CONZ 

Sport and recreation – spoiled for choice

When it comes to world-class facilities for athletes, national and international sporting events, and a rich grassroots club scene, Cambridge delivers more than its share of sport and recreation opportunities.

Positioned in the Waipā District, famously known as the 'Home of Champions', Cambridge lives up to this mantra and has an impressive track record in producing notable sporting champions.

Take a stroll along a handful of streets in Cambridge to see the town's tribute to their local stars. On Duke Street, you'll find 25 plaques honouring the achievements of local athletes on the sporting walk of fame. Turn into Victoria Street to see 18 mosaics set into the footpath featuring prominent local horses and to see a special collection of plaques celebrating the 13 (and counting) Melbourne Cup winners, check out the wall beside the ANZ in Victoria Street.

Rowers on Lake Karāpiro

Rowing

On the edge of Lake Karāpiro sits the impressive Rowing New Zealand building. One of New Zealand's most successful sporting institutions at producing Olympic medals, many of our rowing legends were raised in Cambridge and remain based here today. Among those legends are Rob Waddell, Hamish Bond, Mahé Drysdale, Eric Murrary, Emma Twigg, and Georgina and Caroline Evers-Swindell. School, regional and national-level regattas, are held annually on the lake and bring large crowds of supporters.

Canoe Racing

Canoe Racing New Zealand capitalised on the range of elite training services already offered by Rowing New Zealand, by also building a high-performance training centre on the banks of Lake Karāpiro for its paddlers. The centre also houses the Cambridge Yacht Club, Young Mariners and the Karāpiro Kayak Racing Club.

The Velodrome

This world-class facility is centered around a purpose built 250-metre wooden cycling velodrome, and is host to a range of other high performance sport and community facilities. It's also home to Cycling New Zealand.

Not just for athletes, there's something for everyone – even beginners. Bring a friend or workmate and join the 'Have-a-Go' sessions, a chance to ride on the track where the athletes train. Pack



Cambridge Raceway

the kids and their bikes up and head to the Gallagher Bike Skills Park right next door for a couple of hours of fun. Meet up with friends for lunch or coffee at onsite eatery The Bikery Café.

Don't forget to visit Riverside Adventures, based at the Velodrome, where you can hire a bike to cruise along a section of the Te Awa The River Ride (read more on page 60).

Hautapu Sports Club

Founded in 1903 as a rugby club, the Hautapu Sports Club has served Cambridge and the Waikato region for more than a century. Today the club caters for men and women who want to play rugby and netball and has a strong junior sports programme that includes hockey, netball and rugby.

Turning out many All Blacks over the years, including Liam Messam, Tawera Kerr-Barlow and Luke Jacobson to name a few, the Hautapu Rugby Club is one of the leading clubs in the Waikato, and has helped to develop many players who have gone on to represent provincially.

Cambridge Raceway

Dress to impress at the Cambridge Raceway! Established as a trotting club over 100 years ago, the Raceway has evolved into a multipurpose entertainment venue and is also the home of harness and greyhound racing in the Waikato. Hosting many meets with a full annual calendar that includes one of the richest races in New Zealand, the Night of Champions, with a \$1 million stake and a grand evening of entertainment.



Grassroots Trust Velodrome

Golf Courses

Cambridge is home to world-class golf courses set on picturesque locations. The recently established Tieke Golf Course has already gained national recognition, ranking 17th among New Zealand's top 40 golf courses. The Waikato's oldest golf club, Cambridge Golf Club, was established in 1900 and is an all-weather course offering valleys and rolling green contours that presents a challenge to golfers of all levels.

Bowls

Offering a great selection of friendly bowling clubs, those familiar with the sport and those wanting to try their hand at it for the first time will be well catered for in Cambridge with many members at the many clubs ready and willing to show you the ropes. Bowls offers a great chance to meet people with many clubs running full social programmes with quiz nights, dinners and dancing with themed dress-up nights.

There are loads of other options

Whether you're interested in netball, rugby, cricket, squash, badminton, martial arts, running, riding, or something else, chances are you will find it here in Cambridge! A great place to start your search for the perfect sport and recreation opportunity is Sport Waikato's directory.

Head to sportwaikato.org.nz for more information.

FLEX FITNESS
24 HOUR FITNESS

24/7 GYM - GROUP TRAINING - PERSONAL TRAINING - NUTRITIONIST - YOGA - SAUNA

CONTACT US
P: 07 444 4017
E: CAMBRIDGE@FLEXFITNESSGYM.CO.NZ
8/1913 CAMBRIDGE ROAD
CAMBRIDGE, WAIKATO 3434

Ride the river

Thanks to a great vision and over a decade of work to pull it all together, Te Awa - The Great New Zealand River Ride offers the chance to take in magnificent waterside scenery by bike or on foot.

The longest concrete path in the country, winding its way for 65 kilometers from Ngāruawāhia to Lake Karāpiro, Te Awa River Ride is something locals can be immensely proud of.

In 2009, Simon Perry of The Perry Group had the idea of making the Waikato River more accessible and easier for the community to enjoy. That idea was a path linking towns in the Waikato together alongside the Mighty Waikato – Te Awa.

Enjoyed by locals and tourists alike, the cycle trail sees over 250,000 people using it each year, with that number expected to grow with the explosion in popularity of cycling and e-bikes.

Good for little legs

The trail can be broken up into sections that make it manageable for adults and kids alike. For the most part, it's graded one (the easiest cycling grade), with a few sections graded two (easy).

Opening up a whole new world

The magic of this path is that it opens up parts of the Waikato that many people have never seen before. From majestic views of Lake Karāpiro and the river itself, to secret waterfalls, native groves, the route travels along bridges and elevated boardwalks.

A thriving ecosystem

One of these boardwalks takes you over one of Hamilton's oldest gully systems, known to be a roosting area for the native long-tailed bat (pekapeka-toa-roa). You are encouraged to get off and 'walk your wheels' through the short section that runs through Hammond Park; this way you can also take in the richness of the ecosystem around you.

There are more than 145 different native plant species within this one hectare, making it one of the city's most biodiverse forests. On Ngāti Wairere land, it's also a corridor for tūi and kererū and occasionally kōmako (bellbird) and kākā travelling into the city.

There is of course an on-road detour that has been designed for those who want to stay on their bikes or scooters through this section.

Visit te-awa.org.nz
to start planning your
adventure

Take your time

With a number of cafés on or near the trail, make sure to build in time to stop for a coffee and scone. Even better, make a full morning of it and finish with brunch at The Bikery Cafe, Podium Cafe, or Punnet Eatery, just a few of the eateries conveniently located by the path.

Explore all the local spots

Straying from the well-beaten path can produce all sorts of wonders. In this case, take the time to make short detours to explore local galleries, breweries and nature walks to make the most of what the wider region has to offer:

Inspirit Gallery is a unique destination art gallery and sculpture garden nestled in the heart of Tamahere. A hidden gem in a beautiful rural setting with panoramic rural views.

Independent breweries Hopnotic and Bootleg both produce boutique small batch beer and offer shade and a cold drink that will quench the thirst of riders on the trail.

Maungakawa Scenic Reserve offers a 30 minute (1.2km loop) through regenerating native forest, boasting plenty of birdlife and is just a 15 minute drive from Cambridge.

Hire a bike and go

For those that don't have a bike, Riverside Adventures and River Riders both offer bike hire (including e-bikes), and can organise shuttle transportation if you are wanting to pick a section of the trail to cycle one way.

A collaborative project

The first section of Te Awa was opened in Cambridge in 2009, and piece by piece further sections were opened as the funds were found to build more, with the final section opening at the end of 2022.

The Te Awa River Ride has been generously supported by the Brian Perry Charitable Trust, local councils, Waka Kotahi, and a group of wonderful community and business partners.

Bite-sized or full steam ahead!

Whether you want to take the Te Awa a bite at a time and tick off smaller sections over weekends, or you are going to tackle the whole 65 kilometres in one go with family and friends, don't forget to build in plenty of time to soak in the scenery and everything the local communities and businesses along the trail have to offer.



Ride the river from
Ngāruawāhia, through
Hamilton, Tamahere, and
Cambridge to Lake Karāpiro



Five reasons to love Lake Karāpiro



A taonga, a source of power and a hub for water sport lovers, the picturesque Lake Karāpiro lies just six kilometres south east of Cambridge.

Karāpiro is a hydroelectric lake on the Waikato river, that feeds into the Karāpiro Dam and supplies power to the region. The dam was constructed in 1947 and was the second of eight built as a result of the Waikato hydro scheme, part of a government programme at the time to lock in electricity resources for a national power grid.

Although a source of electricity was created, a number of special places with deep meaning for tangata whenua were subsequently flooded in the making of the dam. Read more about the heritage of Lake Karāpiro on page 5.

For the people of Cambridge today, Lake Karāpiro offers endless opportunities for outdoor adventures and a stunning backdrop to call home.

1. Witness sporting legends in action

As Waikato's premier water venue, the Lake sees a number of national and international sporting and cultural events each year and the centre of the action is the Lake Karāpiro Domain.

Perhaps most famous for being the home of Rowing New Zealand,

it also hosts canoeing, kayaking, waka ama, dragon boat racing, powerboat racing, water skiing, wake boarding and yachting events. Tens of thousands of visitors head here every year to witness athletes compete on this world-class lake.

As well as being a hub for athletes and spectators, Lake Karāpiro can be enjoyed recreationally and is a great spot for boating, water skiing, duck shooting, sailing, swimming and picnicking. Podium Café is also a fabulous stop for coffee or brunch.

2. Glowworms!

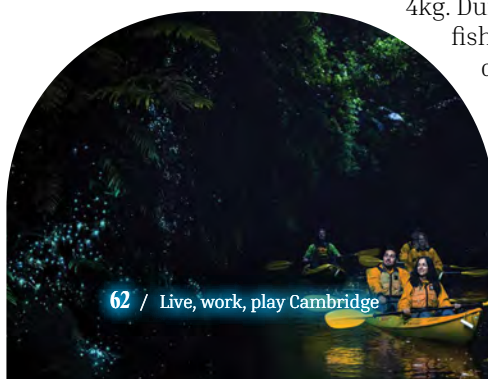
At the southern edge of Lake, up the Pokaiwhenua Steam is an ancient like world with towering rock formations, ferns and trees draping over the edges. This magical spot is home to millions of twinkling glowworms.

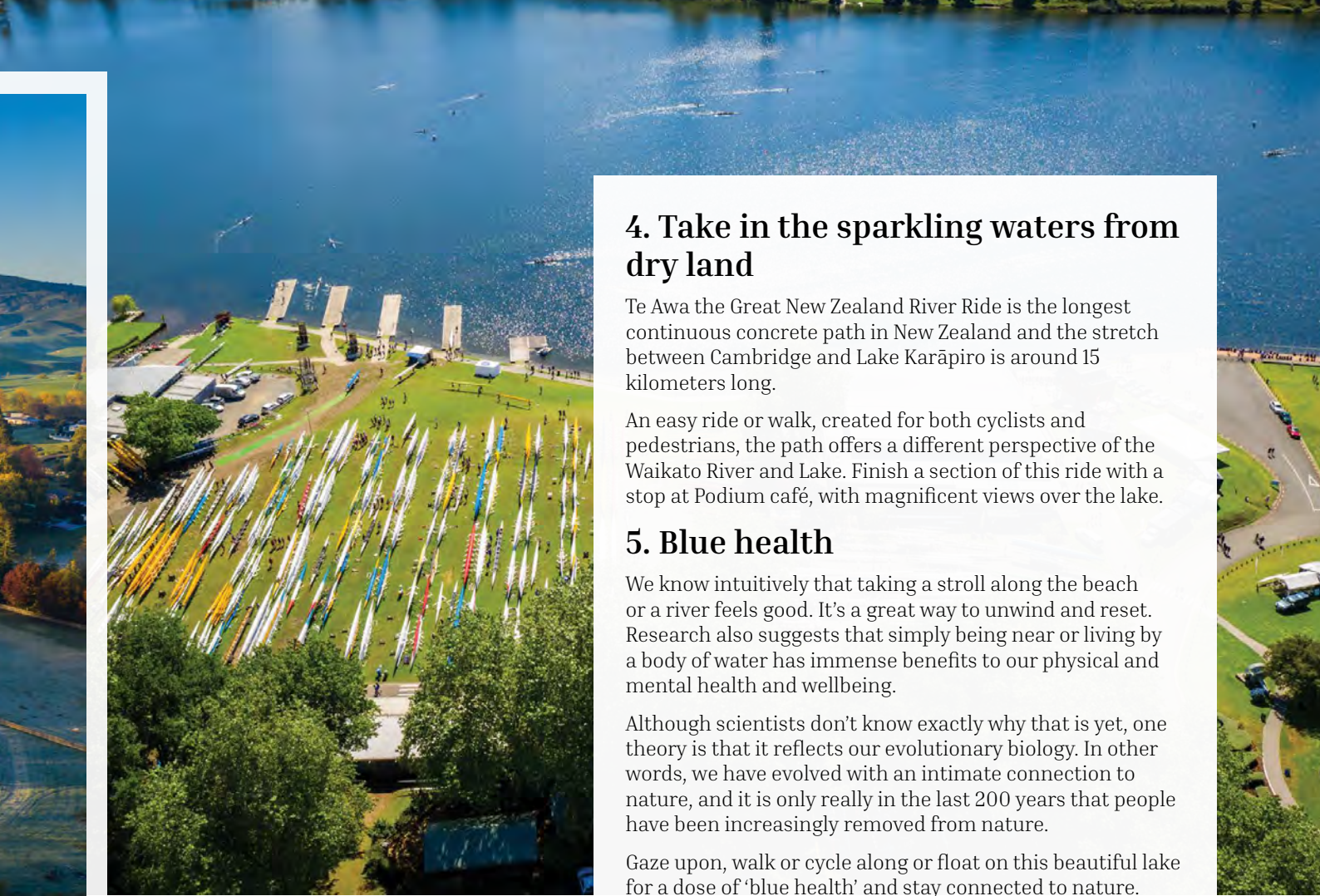
Only accessible via the water and of course only seen at night, take a kayak or a guided glowworm tour run by one of two local operators, Riverside Adventures or The Boatshed Kayaks to enjoy the full adventure safely with storytelling adding to the experience.

3. Fishing

A popular fishing spot, the upper reaches of the lake are home to trout! Each year, Fish and Game release around 2000 rainbow trout and 500 brown trout into the lake. The best fishing is said to be around the head of the lake where the water leaves Arapuni Dam.

It's not uncommon to land trout over 10 pounds, with rainbows averaging 2kg and brown trout nearly 4kg. During October and November, the fishing can be hot, especially after dark, as big fish feed insatiably on smelt. Horahora Road provides great access for anglers from the shore. The stretch of water from the Little Waipā upstream is also a great spot to try your luck!





4. Take in the sparkling waters from dry land

Te Awa the Great New Zealand River Ride is the longest continuous concrete path in New Zealand and the stretch between Cambridge and Lake Karāpiro is around 15 kilometers long.

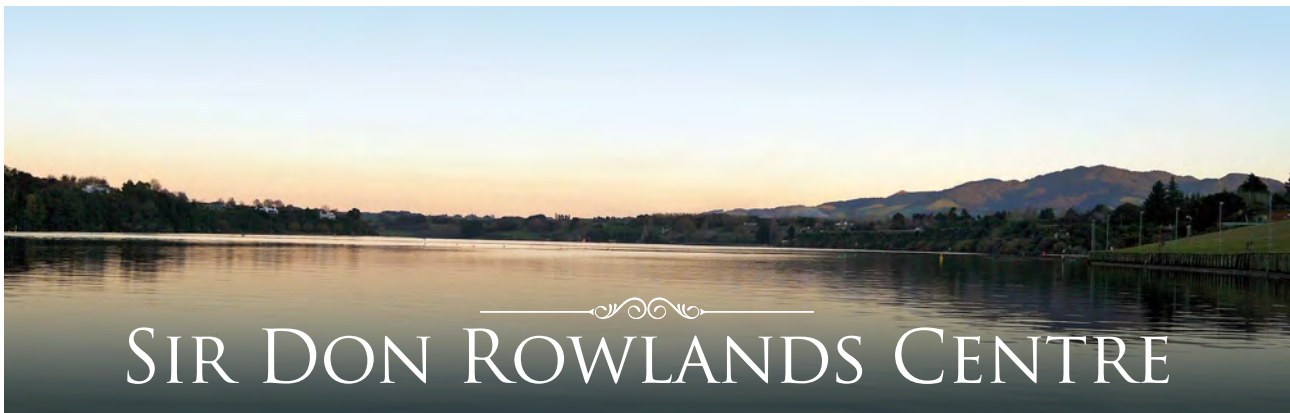
An easy ride or walk, created for both cyclists and pedestrians, the path offers a different perspective of the Waikato River and Lake. Finish a section of this ride with a stop at Podium café, with magnificent views over the lake.

5. Blue health

We know intuitively that taking a stroll along the beach or a river feels good. It's a great way to unwind and reset. Research also suggests that simply being near or living by a body of water has immense benefits to our physical and mental health and wellbeing.

Although scientists don't know exactly why that is yet, one theory is that it reflects our evolutionary biology. In other words, we have evolved with an intimate connection to nature, and it is only really in the last 200 years that people have been increasingly removed from nature.

Gaze upon, walk or cycle along or float on this beautiful lake for a dose of 'blue health' and stay connected to nature.



SIR DON ROWLANDS CENTRE

A spectacular lakeside venue with stunning views!

- Located just minutes from Cambridge

Central Waikato location • Host up to 1,000 people • Five conference rooms • Full bar facilities
Flexible catering options • On-site accommodation • Ample free on-site parking



BOOK YOUR EVENT WITH US TODAY!

Contact: **Liz Stolwyk**
info@lakekarapiro.co.nz • 07 827 4178

Lake Karāpiro
WWW.LAKEKARAPIRO.CO.NZ



Exploring our beautiful backyard



Cambridge
Skatepark

Have fun discovering the parks, walkways and other recreational gems around Cambridge

As you embark on a journey to enjoy everything our awesome town has to offer, get ready to experience a world of outdoor adventure and recreational wonder.

Cambridge is a haven for nature enthusiasts and active individuals, offering an array of parks and recreational areas that cater to all ages and interests. From lush green spaces to superb sports facilities, there's something for everyone to enjoy. So, lace up your walking shoes, grab your bike, and let's dive into the parks and recreational treasures awaiting you in Cambridge.

Dog parks

Embrace the great outdoors with your furry companions at one of the many dog-friendly parks scattered throughout Cambridge. Let your four-legged friends frolic, socialise and bask in the joy of off-leash adventures at Lamb Street, Shelley Street, Wordsworth Street, Gil Lumb Park, Alpha Street, Swayne Road, Blackie Reserve, and designated areas at Lake Te Koo Utu.

Your pup must always be on a lead when on Council parks and reserves, unless the areas are designated otherwise. Some parks have areas specifically set aside for dog exercise, while others prohibit dogs completely. Waipā District Council frequently updates its off-leash exercising areas, so check out their website for more information.

Skate parks, mountain biking and pump tracks

If you're a skateboarding or BMX enthusiast, we have an amazing skate park and pump track located by the Perry Aquatic Centre on Dominion Ave where you can perfect your tricks and flips. You can also head to the Leamington Domain skate park to showcase your skills and join the local skateboarding community. The Cambridge BMX Club is further up the road on Lamb Street, while mountain biking enthusiasts should check out the Te Miro Mountain Bike Park..

Walkways

Throw on your sneakers and explore the picturesque walkways that wind through Cambridge. Take a leisurely stroll along the Waikato River Trail or Te Awa River Ride, where you can soak up the breathtaking beauty of the river. St Kilda Waterways is another great place to explore while getting your steps up.

Playgrounds

Cambridge offers a myriad of playgrounds that will delight children and bring out the inner child in adults. Let your little ones unleash their energy at destinations such as the Leamington Domain, Thornton Road, St Kilda, or Shelley Street/Thompson Street, where they can climb, swing, and slide to their heart's content.



Perry
Aquatic
Centre



Perry Aquatic Centre

Cool off on a sunny day or make a splash year-round at the Perry Aquatic Centre. The town pool offers a refreshing retreat for individuals of all ages to enjoy some aquatic fun.

The Perry Aquatic Centre includes an indoor 25m x 25m pool, a learner/hydrotherapy pool, tots' pools, spa pool and a splash pad. It also has an upgraded 50m outdoor pool, which is open during the summer months, (Labour weekend to Easter). Aqua aerobics classes are Monday to Friday, and Swim Waipā offers a wide range of swim programmes for all ages and abilities.

Barbecues are available to hire during the months that the outdoor pool is open.



Leamington Domain

The Leamington Domain offers an array of exciting opportunities to enjoy the outdoors, stay active, and spend quality time with loved ones. The on-site BBQs and picnic tables provide the perfect setting for a memorable gathering with family and friends. Also, whether you're a netball, cricket, or petanque fan, there's something for everyone to enjoy. Kids will love the fantastic play area, while dog owners can take their furry friends for a leisurely walk (on lead). And if you're a skating fan, check out the covered skating area next to the netball courts. For rugby and squash enthusiasts, further up the road on Carlyse Street, you'll find the Leamington squash and rugby clubs, plus a dog off-leash exercise area.

Lake Te Koo Utu

Discover a tranquil oasis at Lake Te Koo Utu, a serene and sacred water body nestled within the heart of Cambridge. Take a leisurely walk around the lake's perimeter, enjoy a peaceful picnic with family and friends, or simply sit back and relish the mesmerising beauty of the surrounding environment.

Don't forget to check out Te Ara Wai Journeys at tearawai.nz/tour while you're there to learn more about the historic and sacred importance of the area.

Unichem

Cambridge Pharmacy

Unichem
Cambridge
52 Victoria Street
Mon to Fri: 8.30am - 5.30pm
Sat: 9.00am - 2.00pm
PH: 07 823 0700

Unichem
Medical Centre
48 Alpha Street
Mon to Fri:
8.30am - 5.30pm
PH: 07 823 7652

Unichem
Family Health
1913 Cambridge Road
Mon to Fri:
8.30am - 5.30pm
PH: 07 823 0704

**YOUR FRIENDLY LOCAL PHARMACY PROVIDING YOU
WITH CARE AND ADVICE IN CAMBRIDGE FOR 40 YEARS**





Leamington Trains

Indulge in a low-cost, fun and unique experience at the Leamington Domain where the Cambridge Model Engineering Society operates its enchanting miniature trains. Weaving through the perimeter of the Domain, the trains offer nostalgic rides for both children and adults. These trains, which operate on Sundays, have become a beloved addition to Cambridge.

Pickleball

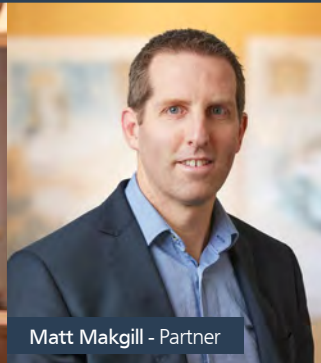
Embrace the growing trend of pickleball – a fun, low-impact and engaging sport that combines elements of tennis, badminton, and table tennis. Join the lively pickleball community in Cambridge and engage in friendly matches on a badminton-sized court with a low net. Players use paddles (bats) and a hollow plastic “wiffle” ball to play games of about 15-20 minutes. People of all ages and fitness levels quickly pick it up and achieve rallies and games. Our local club can provide bats for people wanting to give it a go. Just turn up and make sure you have non-marking soles on your shoes.



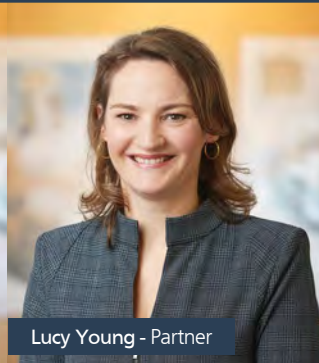
Cambridge pickleball



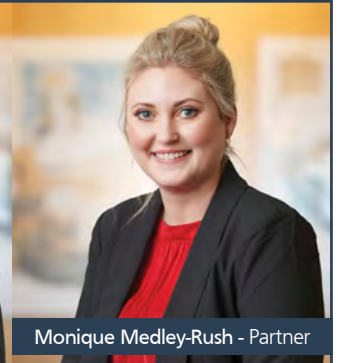
Lisa Ware - Partner



Matt Makgill - Partner



Lucy Young - Partner



Monique Medley-Rush - Partner

Providing Tailored Legal Solutions

Since 1906, Lewis Lawyers have delivered tailored legal solutions by partnering and forming long lasting relationships with clients and the wider community. We offer expert legal services spanning across an extensive range of practice areas.

At our firm, you will meet a team of collaborative and pragmatic lawyers who endeavour to walk with you to simplify and resolve your legal matters.



Experienced professionals. Local specialists. Quality advice.
 Cambridge: Ph 07 827 5147 | Hamilton: Ph 07 848 1222 www.lewislawyers.co.nz



Safer Cambridge communities

When you move to Cambridge, you'll quickly notice thriving businesses, the pataka kai, community gardens, and trees, which exist because of the kindness and generosity of local businesses and community volunteers.

The Safer Cambridge Trust is another example of a strong community asset that is backed by businesses and volunteers to operate Cambridge Neighbourhood Support and the Cambridge Community Patrol.

Cambridge Neighbourhood Support fosters a sense of community among neighbourhoods through "street villages", which are designed to offer support

during both regular and emergency situations. They use their strong relationships with the Police, Civil Defence Emergency Management, and Fire and Emergency New Zealand to assist neighbourhoods to develop emergency plans, which identify the skills and equipment needed in an emergency and those who would need help to evacuate.

Meanwhile, the Cambridge Community Patrol are the extra eyes and ears of the local Police, patrolling the streets on most evenings to keep a lookout for suspicious activities and antisocial behaviour, secure unattended businesses, and locate missing people.

Over the years the Trust has run a range of programmes, including having teenagers visit and assist older people, a strong Covid-19 response including a "Shopping Buddy" programme, regular community safety meetings, and a new children's citizenship programme encouraging children to plan and undertake behaviours that show respect and support for their school and communities.

When moving to Cambridge, make sure you contact Cambridge Neighbourhood Support to be connected to your new neighbourhood. If you would like to register with Neighbourhood Support, volunteer for the community patrol or contact the Trust, email info@safercambridge.co.nz or visit www.safercambridge.co.nz.



Creating safe, resilient and connected communities.

Keen to get involved?

Email: info@safercambridge.co.nz

Visit us: Wednesdays and Thursdays from 9am until 11am at Cambridge Community Pavilion, Cnr Queen and Dick Streets

www.safercambridge.co.nz



Hamilton Gardens

Venture down the road

While there are so many treasures to unlock in and around Cambridge, there are many hotspots waiting to be discovered within a two-hour drive too.

Living in Cambridge, you're perfectly positioned for a weekend getaway or day trip to take part in... well, anything you like! We're surrounded by an abundance of remarkable destinations, each offering its own unique experiences and memories to be made. So, venture beyond our town's borders and uncover the hidden treasures that await you down the road.

An urban adventure in Auckland

Just a short 1.5-hour drive on the expressway, Auckland offers vibrant energy, cultural diversity, and endless possibilities. Immerse yourself in the city's bustling atmosphere, indulge in world-class dining, experience captivating art and entertainment, head to Waiheke or take a charter boat out in the Hauraki Gulf, and explore its iconic landmarks like the Sky Tower and Auckland Museum.

A day at the Hamilton Zoo

Discover the wonders of Hamilton Zoo, located just a stone's throw away from Cambridge. Immerse yourself in a breathtaking 25-hectare setting and meet over 600 native and exotic animals thriving in their natural habitat. Witness the majesty of the largest free-flight aviary in New Zealand, devoted to native birds and plants, and be amazed by the ever-changing sights and sounds. Come face to face with the animals and learn about their fascinating counterparts in

the wild. Explore ways to aid in their conservation efforts and become a part of this important cause. Hamilton Zoo not only delivers enjoyment for all ages, but also serves as an essential link between people and nature, promoting conservation and research projects, rehabilitation, and breeding programmes for endangered species and precious native animals.

A journey to Middle Earth

Step into the realm of fantasy and embark on an extraordinary adventure to Hobbiton, the iconic film set of The Lord of the Rings and The Hobbit trilogies. Just 30 minutes from Cambridge, this magical location will transport you to the enchanting world of hobbits, lush green hills, and charming hobbit holes. Engage in the rich storytelling and immerse yourself in the beauty of the Shire as you explore this extraordinary movie set.

Laid back vibes in Raglan

Just a quick trip to the West Coast lies the relaxed town of Raglan, which boasts stunning black sand beaches, incredible surfing opportunities, a picturesque harbour, and a laid-back atmosphere. Visitors can enjoy surfing, biking or hiking, soaking up the sun, and checking out the vibrant local arts scene. With its unique charm and breathtaking natural beauty, Raglan is a top destination to explore in Waikato.



Hobbiton™
Movie Set Tours



Raglan



Waitomo

Adventure in Rotorua where nature meets cultural richness

Head through Tirau (stopping to browse the shops and grab a coffee first, of course) and onto the geothermal wonderland of Rotorua where you'll experience the captivating fusion of nature and Māori culture. You'll discover the mesmerising geothermal landscapes, witness the majestic Pohutu Geyser erupt, and indulge in the healing powers of natural hot springs. Dive into Māori traditions through immersive cultural performances and embrace the warm hospitality that Rotorua has to offer.

The world-famous Hamilton Gardens

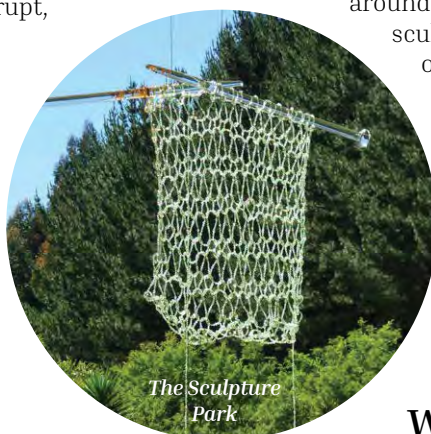
Discover the intriguing world of Hamilton Gardens, which was once a landfill site but has now become a renowned attraction with a unique concept of showcasing the history of gardens. As the most popular tourist destination in Waikato, it welcomes over a million visitors every year. Take a journey of exploration through the garden's winding paths and be amazed by the unexpected wonders that unfold before you. From the peaceful Sung Dynasty Chinese Scholar's garden to the exquisite Italian Renaissance Garden, and the grandeur of the Indian Char Bagh ('four quartered') Garden, each themed garden collection showcases the diverse cultures and historical garden styles from around the world.

Breathtaking Taupō

Prepare to be awe-struck by the breathtaking wonders of Taupō, home to New Zealand's largest lake and a playground for outdoor adventurers. From the majestic Huka Falls to the mesmerising turquoise waters of the lake, Taupō offers an abundance of thrilling activities such as jet boating, skydiving, and hiking. You can also head further south for skiing at either Whakapapa or Tūroa ski fields. Indulge in the natural beauty that surrounds you and create memories that will last a lifetime.

The Sculpture Park at Waitakaruru Arboretum

Discover the breathtaking Sculpture Park at Waitakaruru Arboretum, just a short 15-minute drive from Cambridge. This stunning 42-acre park was once a hard rock quarry but has been transformed into a magnificent collection of trees and shrubs from around the world. The park boasts over 70 sculptures on display and is the largest outdoor sculpture gallery in New Zealand. With three new exhibits curated every year, the park is open every day and offers sturdy walking tracks (recommended for all-weather conditions), ample parking, and wheelchair accessibility for most areas. Take a self-guided tour of approximately 2km and explore the dramatic landscape and incredible art.



The Sculpture Park

Waitomo Wonder

The Waitomo Caves are an exciting destination for thrill-seekers who want to capture incredible stories and experiences. You can join a guided tour to learn about the caves' history, myths, and legends, or opt for a heart-pumping adventure. Activities include rafting through the caves, witnessing the beautiful glowworms overhead, abseiling into the depths, and ziplining through dark passageways. The Waitomo Caves are sure to impress adventurers and provide unforgettable memories to share with others.

Tranquil Tea Heaven

Discover the world-renowned Zealong Tea Estate, the sole commercial tea plantation in New Zealand. Enjoy 100% organic award-winning tea and indulge in a tea-infused culinary journey. Immerse yourself in the fascinating world of tea with the Discover Zealong Tea Experience. Savour a relaxing high tea at the Zealong Tea House, or take home exquisite teas from the retail boutique. Zealong Tea Estate is an ideal destination for cultural escapades, fine dining, tours, and special events. With something for everyone, Zealong Tea Estate is a must-visit location.



SHAW'S THE HEART OF NZ HEAVY INDUSTRY



Shaw's has been taking care of NZ business since 1909. With more than a century of trade experience, they are considered the number one supplier to New Zealand's Heavy Industry.

Servicing forestry, ports, construction, commercial fishing, roading, shipping, oil and gas, the Shaw's crew are one hundred per cent focused on providing exceptional service, top quality equipment and the best possible advice.

Shaw's is one big family and people are at the core of what makes the company a uniquely special place to work. Based in Cambridge on a six hectare site with over 10,000m² of warehouse and office space provides the team with the ultimate working environment.



Founded in Sheffield England in 1820 John Shaw has a long and extremely illustrious history. John Shaw (NZ) Ltd was established in Auckland in 1909 becoming New Zealand's first dedicated wire ropes merchants. The rapidly expanding industry saw John Shaw (NZ) Ltd supplying equipment for pylons, freezing works, railways, Fiji Sugar Corp, Tasman Pulp and Paper mill, the list goes on – John Shaw's had it covered. A new millennium marked a new era; the year 2000 saw John Shaw NZ become a one hundred percent Kiwi owned and operated company, links were severed from its English parent company and John Shaw (NZ) was on its own changing their trading name to Shaw's Wire Ropes Ltd.



Being at the heart of NZ industry meant relocating to the heart of the country, the mighty Waikato was the place to be. In 2005 a National distribution centre was opened in Cambridge. Five years later the name was changed to Shaw's as the business evolved and diversified its product range and services.

Since then, Shaw's has been appointed the exclusive and key distributor for a comprehensive range of top-quality products and heavy machinery brands. Shaw's supplies equipment to many of New Zealand's major infrastructure projects including railways, roading, wind farms and bridges. Shaw's continues onwards and upwards, meeting the ever-expanding needs of their customers and keeping NZ heavy industry going. Contact the Team, sales@shaws.co.nz or visit www.shaws.co.nz, ready when you are.

"Excellence is not a skill, it's an attitude" – Ralph Marston.



Alpino

Restaurant & Bar – alpino.co.nz

Italian tradition entwined with modern culture. Immerse yourself in the atmosphere of Alpino, it's travelled a long way to be here with you. You're at our kitchen table now.



Ampersand

Homewares & Collectables – [f](#) [@](#) Ampersand Retro

Step into Ampersand Retro, where treasures from the past await. Discover vintage allure in retro collectables, homewares, and furniture – a portal to mid-century nostalgia. Comes see us at 4B Empire Street.



Cambridge Kitchens

Kitchen Design – cambridgekitchens.co.nz

Interior and Kitchen Designer Elizabeth Karam will design a kitchen specifically to suit your family and lifestyle, an efficient 'working' space and something you can enjoy for many years to come.



Construction Advantage Limited

constructionadvantage.co.nz

Project and construction management company specialising in managing developments and delivering commercial and industrial property assets for private clients from fitouts, through to million dollar projects.



Femme Fit 50

Women's Only Gym – femmefit50.co.nz

Welcome to our gym in Cambridge, where women can join a supportive community, improve their physical health, boost their mental wellness, and leave feeling stronger than ever. Book online for your free trial.



Footloose

Footwear & accessories – footloose.co.nz

Step up your shoe game with our high-quality and on-trend women's footwear collection, including European-made and inspired styles, bags and jewellery to compliment any outfit. Find us at 46 Duke Street.

Showcase



Reuben Silby

Business Advisor & Broker – reubensilby.nz

I offer confidential, professional advice and services around preparing and presenting businesses to sell. Complementary insights and advice to elevate your exit value – contact me before you think of selling!



Riverside Adventures Waikato

Unique Adventures – riversideadventures.co.nz

Adventure through Cambridge by bike or kayak. Ride the Te Awa River Ride, or even a twilight kayak glowworm tour. We offer guided tours, fully inclusive packages, or just hire for the day.



Robert Harris Café Cambridge

Eat – robertharris.co.nz

Renowned in New Zealand for our quality coffee and welcoming team. Our inviting setting at 39 Victoria Street Cambridge, offers fantastic seating indoors or you can enjoy the sunshine in our courtyard.



Squoodles

Educational Resources – squoodles.co.nz

Squoodles provide an exciting online experience when sourcing quality and affordable educational resources, toys and books for your child, ECE centre or primary school.



The Heritage Trading Company

Boutique shops – [f](https://www.facebook.com/theheritagetradingcompany) [@](https://www.instagram.com/theheritagetradingcompany) theheritagetradingcompany.com

Discover vintage and antique wares on 40 Duke Street. Shop salvaged and reloved homewares from Colonial Heritage Antiques, Tuffet & Co, Redeemed Recycled Interiors, and Linen & Stone. Call 07 827 4211 or visit today.



The Branding Shed

Embroidery and Print – thebrandingshed.co.nz

Discover your local uniform shop with an extensive selection of quality garments, workwear, and PPE. Experts in custom embroidery and printing for distinctive branding that gets you noticed.



CELEBRATING LIFE - YOUR WAY

We believe that each funeral service should be as unique as the life you are celebrating.

When a funeral is personalised, it creates a special space for sharing precious memories, telling stories, and simply being together with friends and family.

Grinter's Funeral Home are dedicated to providing personalised and meaningful funeral services

Grinter's Funeral Home proudly serving the people of Cambridge, Hamilton, and the surrounding areas.

Grinter's
FUNERAL HOME

3 Hallys Lane, Cambridge | 07 827 6037
office@grinters.co.nz | www.grinters.co.nz



MEMBER | **Funeral Directors**
ASSOCIATION OF NZ

The Funeral Trust
FUNERAL DIRECTORS ASSOCIATION OF NZ



f Follow us on
Facebook



Breaking new ground every day



A local company bringing trenchless
drilling solutions nationwide

We deliver efficient and cost-effective results without disrupting the landscape. From fibre-optic installations to pipeline repairs, our trenchless methods minimise environmental impact while maximising productivity.